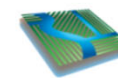




Chowchilla Subbasin *GSP Advisory Committee Meeting Water Year 2024 Annual Report*

March 26, 2025



DAVIDS
ENGINEERING, INC.



Luhdorff & Scalmanini
Consulting Engineers

Agenda

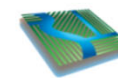
- SGMA Overview
- Groundwater Conditions
- Land Subsidence
- Water Year (WY) 2024 Surface Water System Water Budget
- Groundwater Sustainability Agency (GSA) Projects and Management Actions Summary



CHOWCHILLA SUBBASIN ANNUAL REPORT

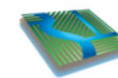
APRIL 2025

Prepared By
Davids Engineering, Inc.
Luhdorff & Scalmanini



Agenda

- SGMA Overview
- Groundwater Conditions
- Land Subsidence
- WY 2024 Surface Water System Water Budget
- Groundwater Sustainability Agency (GSA) Projects and Management Actions Summary



SGMA Overview

Abbreviations:

AB - Assembly Bill

DWR - Department of Water Resources

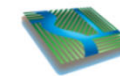
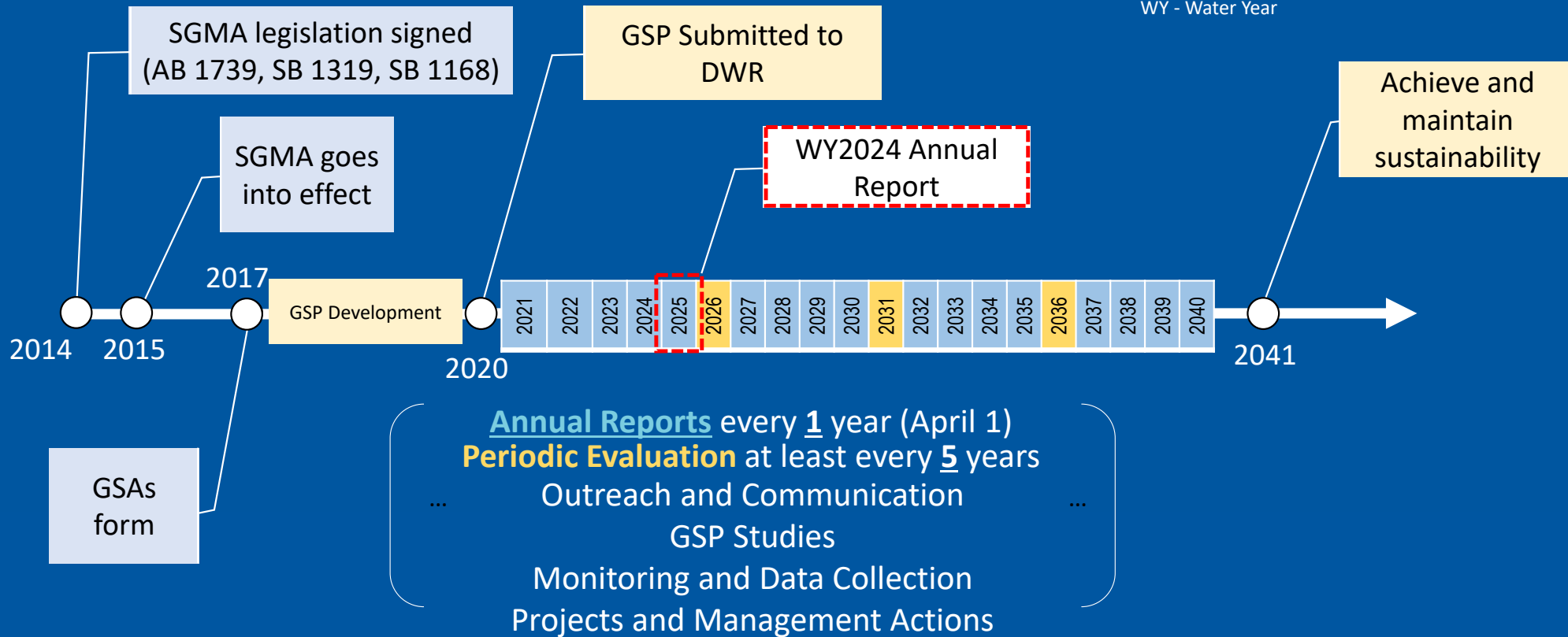
GSA - Groundwater Sustainability Agency

GSP - Groundwater Sustainability Plan

SB - Senate Bill

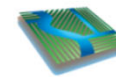
SGMA - Sustainable Groundwater Management Act

WY - Water Year



SGMA Overview Cont....

- California Code of Regulations Title 23 (23 CCR) §356.2 requires that annual reports be submitted to DWR by April 1 of each year following the adoption of the GSP
- Annual Report shall include the following general components for the preceding WY:
 - Surface Water System Water Budget
 - GSA Project Summary
 - Groundwater Conditions



Agenda

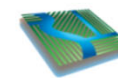
- SGMA Overview
- Groundwater Conditions
- Land Subsidence
- WY 2024 Surface Water System Water Budget
- Groundwater Sustainability Agency (GSA) Projects and Management Actions Summary



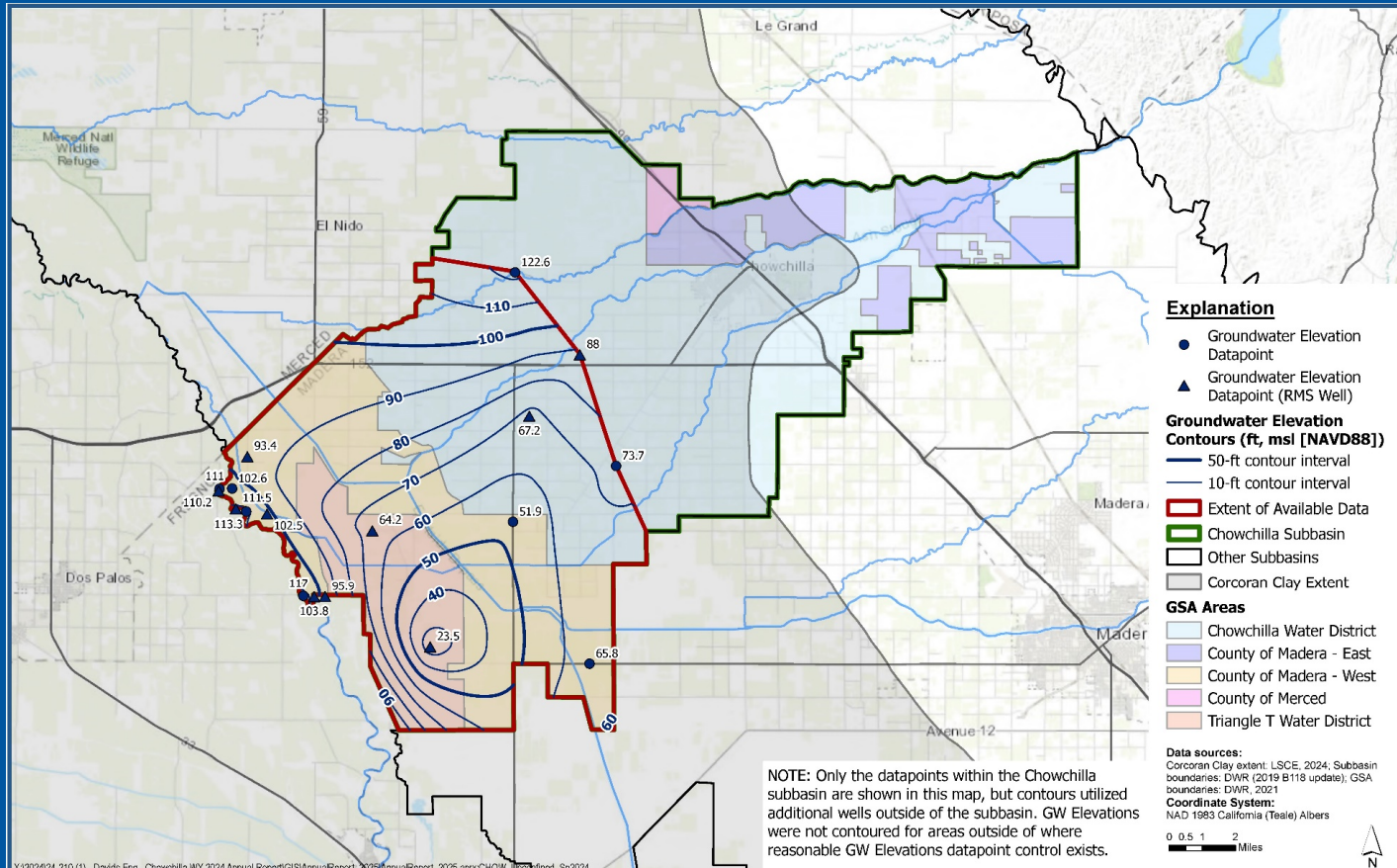
CHOWCHILLA SUBBASIN ANNUAL REPORT

APRIL 2025

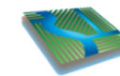
Prepared By
Davids Engineering, Inc.
Luhdorff & Scalmanini



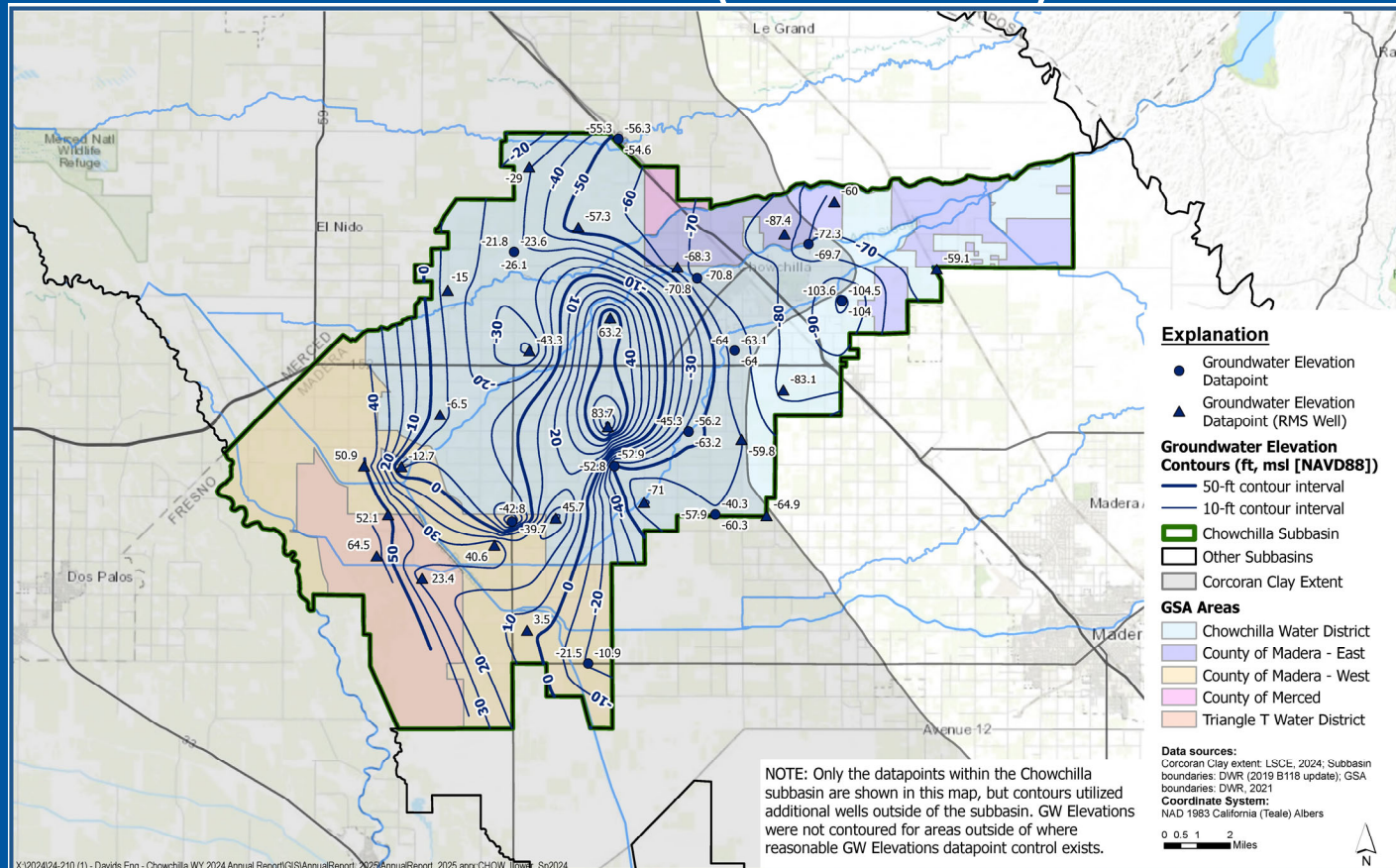
Groundwater Conditions



Spring 2024 GW Contours – Upper Aquifer

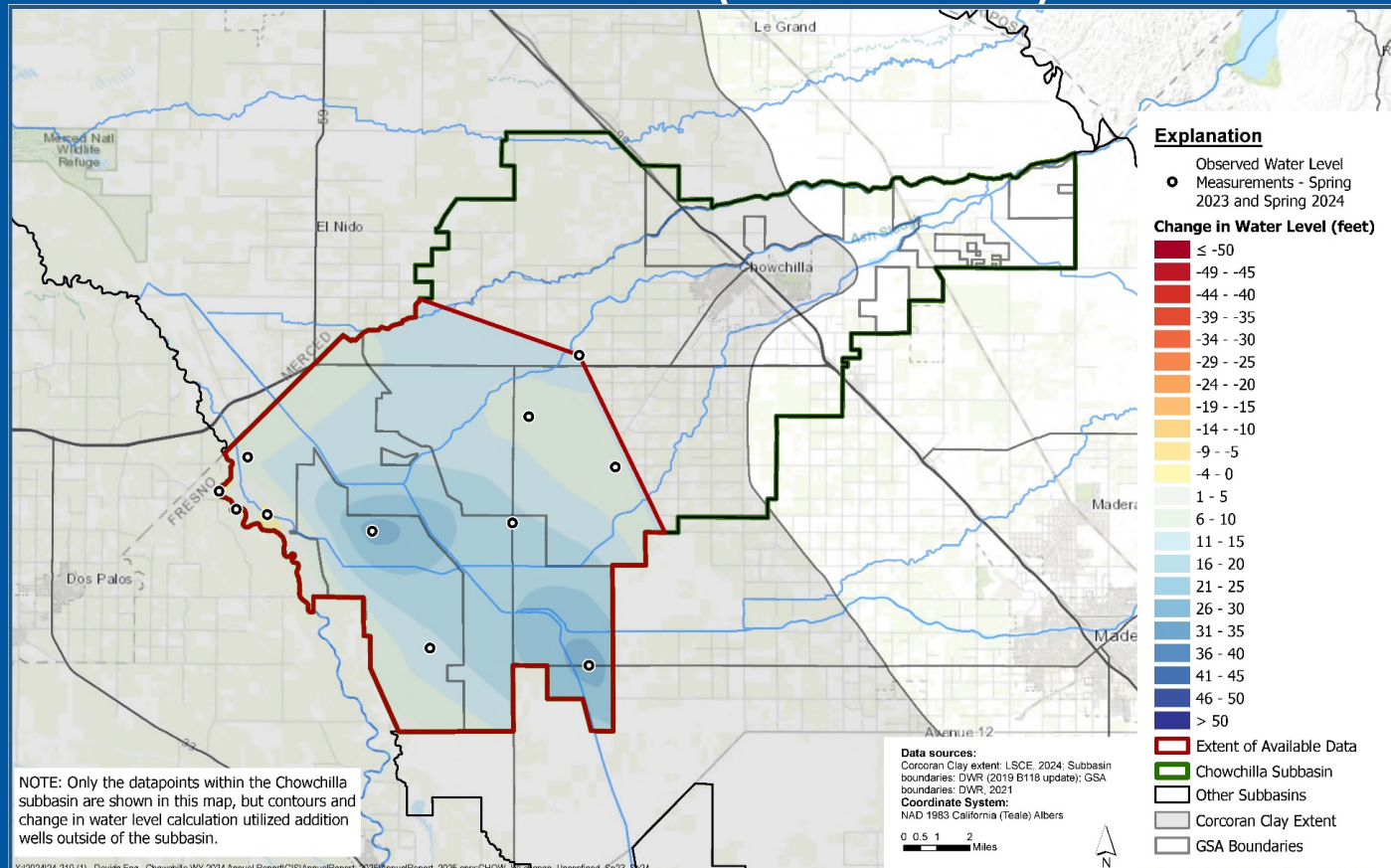


Groundwater Conditions (Cont....)

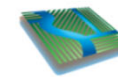


Spring 2024 GW Contours – Lower Aquifer

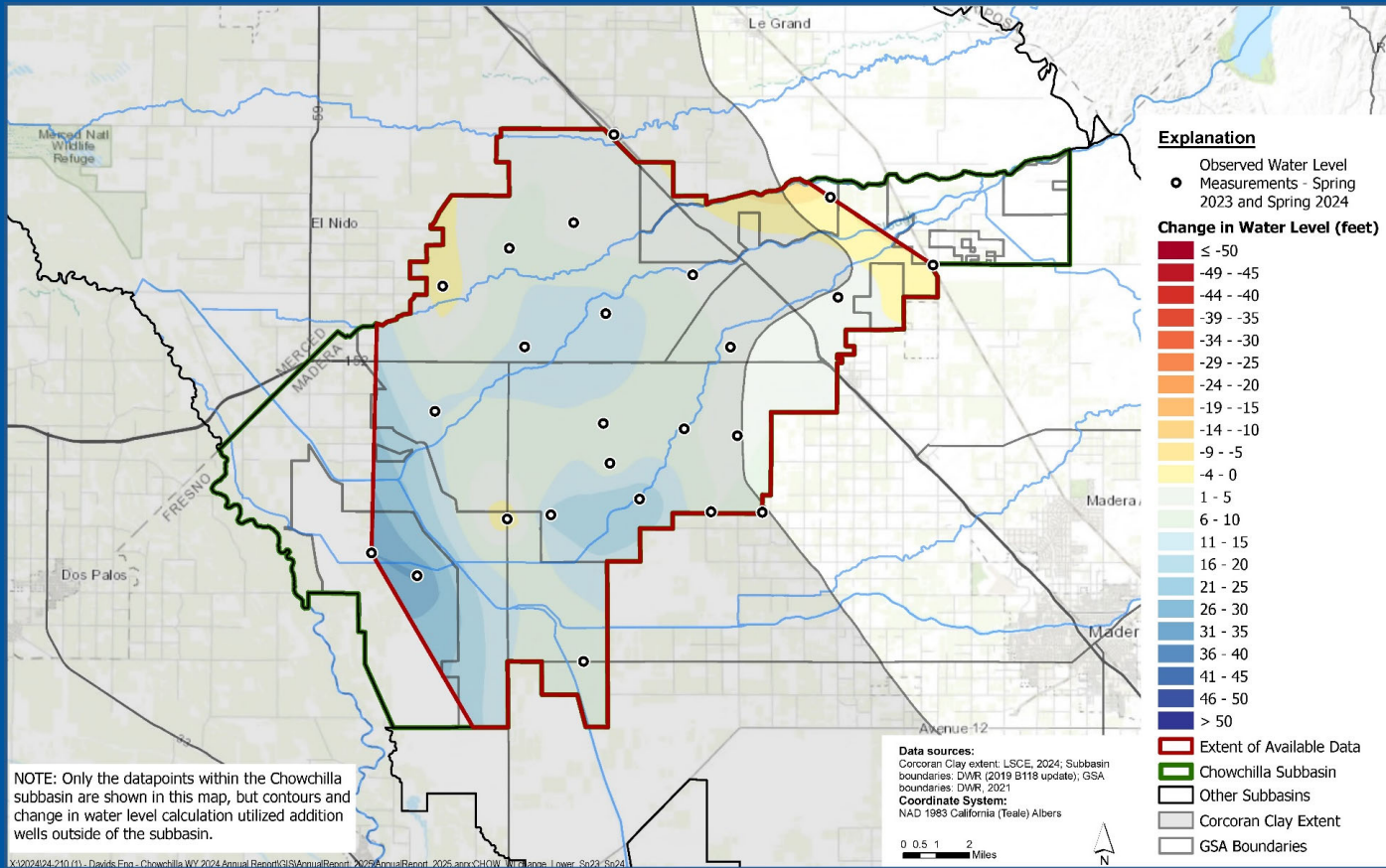
Groundwater Conditions (Cont.....)



Spring 2023-2024 GW Level Change – Upper Aquifer



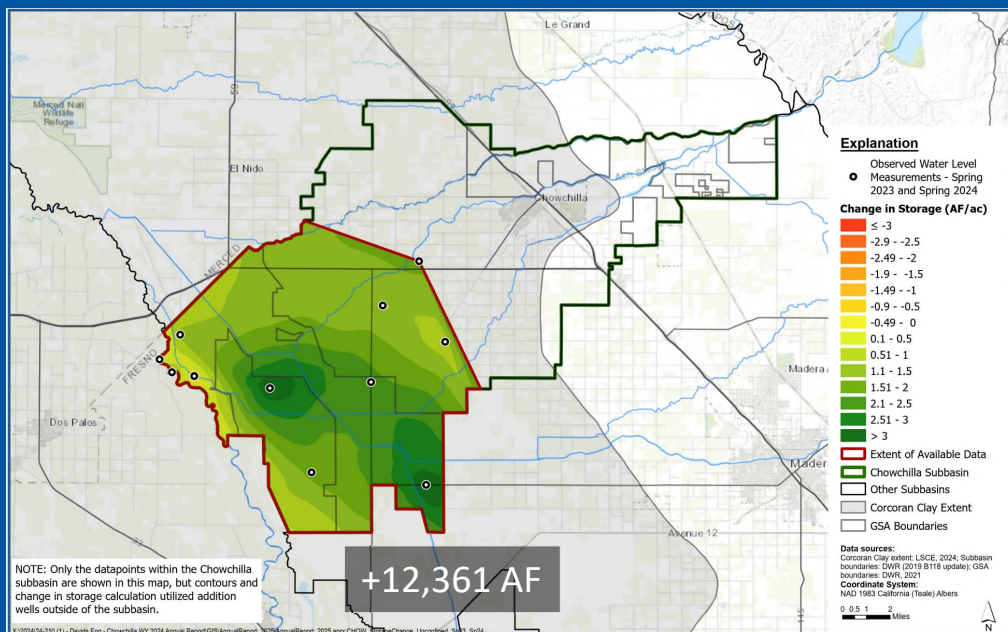
Groundwater Conditions (Cont....)



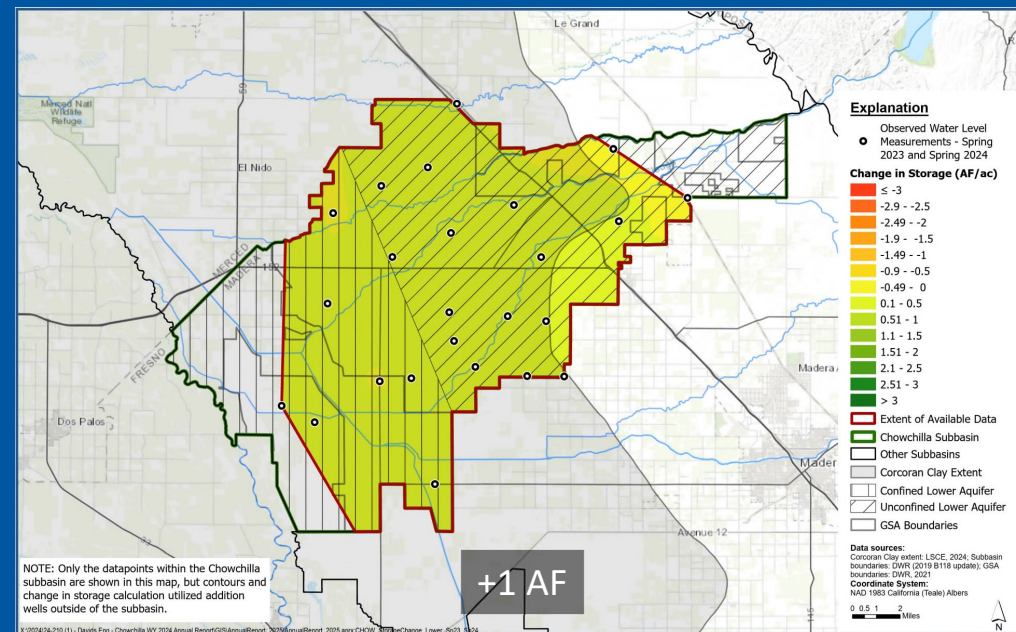
Spring 2023-2024 GW Level Change – Lower Aquifer

Groundwater Conditions (Cont....)

Spring 2023-2024 GW Storage Change



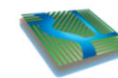
Upper Aquifer



Lower Aquifer

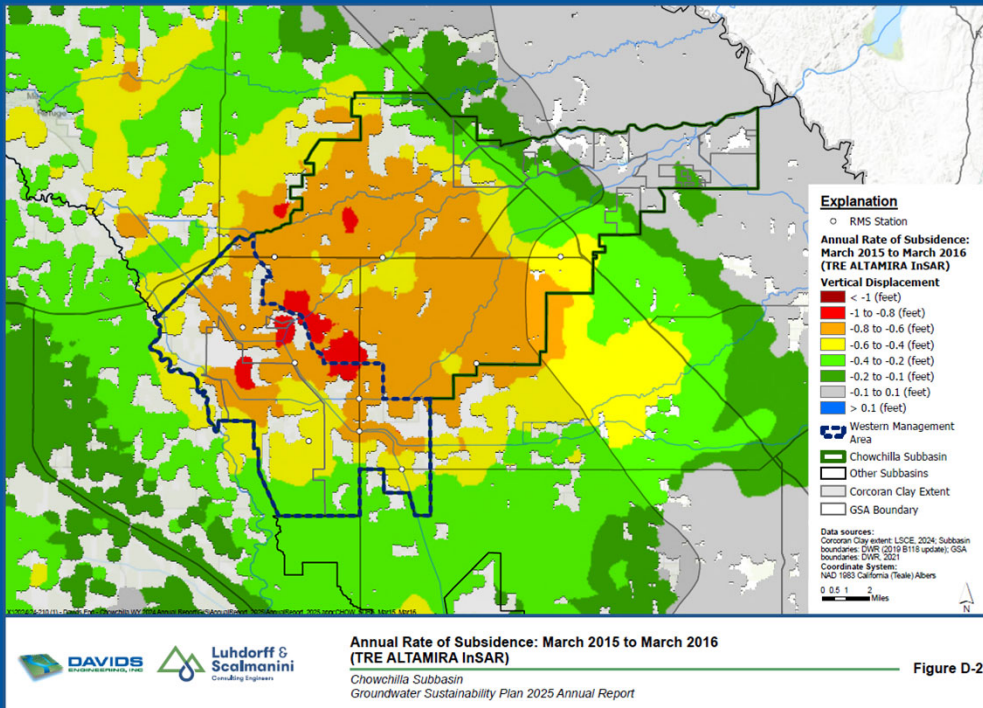
Agenda

- SGMA Overview
- Groundwater Conditions
- Land Subsidence
- WY 2024 Surface Water System Water Budget
- Groundwater Sustainability Agency (GSA) Projects and Management Actions Summary

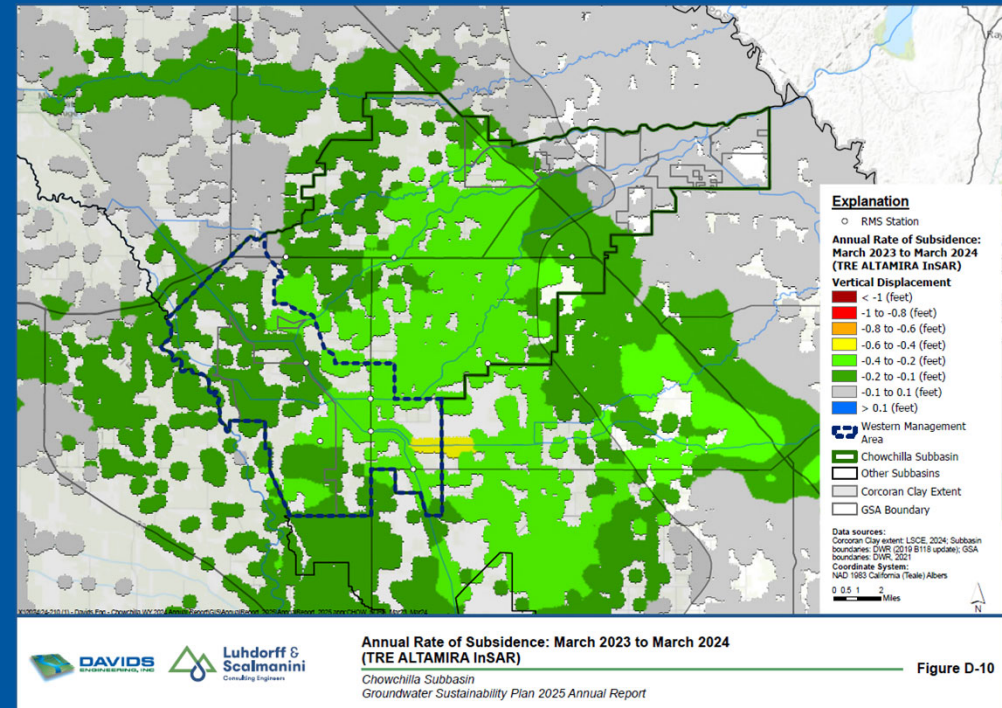


Land Subsidence

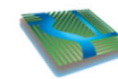
Annual Rate of Subsidence



March 2015 to March 2016



March 2023 to March 2024



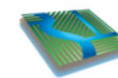
DAVIDS
ENGINEERING, INC.



Luhdorff & Scalmanini
Consulting Engineers

Agenda

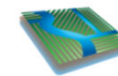
- SGMA Overview
- Groundwater Conditions
- Land Subsidence
- WY 2024 Surface Water System Water Budget
- Groundwater Sustainability Agency (GSA) Projects and Management Actions Summary



WY 2024 Surface Water System Water Budget

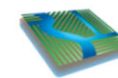
- Overview

- Water budgets are now computed via MCSim
- WY 2024 was an “Above Normal” water year type
- Reporting Requirements:
 - Groundwater Extraction
 - Surface Water Supplies (Used or Available for Use)
 - Total Water Use



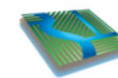
WY 2024 Surface Water System Water Budget

- **Total Groundwater Extraction = 255,900 AF**
 - AG = 250,500 (98%)
 - Urban = 5,500 (2%)
- **Total Surface Water Supplies = 202,400 AF**
 - Local Supplies = 8,500 AF (4%)
 - CVP Supplies = 186,900 AF (92%)
 - Local Imported Supplies = 7,000 AF (4%)
- **Total Recharge = 148,000 AF**
 - Recharge from Applied Water = 59,000 AF (40%)
 - Recharge from Precipitation = 17,000 AF (11%)
 - Recharge from Surface Water = 72,000 AF (49%)



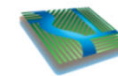
Agenda

- SGMA Overview
- Groundwater Conditions
- Land Subsidence
- WY 2024 Surface Water System Water Budget
- Groundwater Sustainability Agency (GSA) Projects and Management Actions Summary



GSA Projects and Management Actions Summary

- CWD – 10 Projects
- Madera County – 7 Projects
- SVMWC – 1 Project
- TTWD – 3 Projects
- Status ranges from planned to implemented
- Total benefit in WY 2024 = 67,019 AF
- Significant local investment
- Increase recharge, reduce groundwater pumping, demand reduction, water supply acquisition
- Domestic Well Mitigation Program





Questions?

