

MADERA

ESTABLISHED 1893



HEART OF CALIFORNIA

COUNTY



# SB 552 Drought and Water Shortage Risk Analysis and Response Plan

October 2024

Final Draft



@MADERACOUNTY  
maderacounty.com





# Senate Bill 552

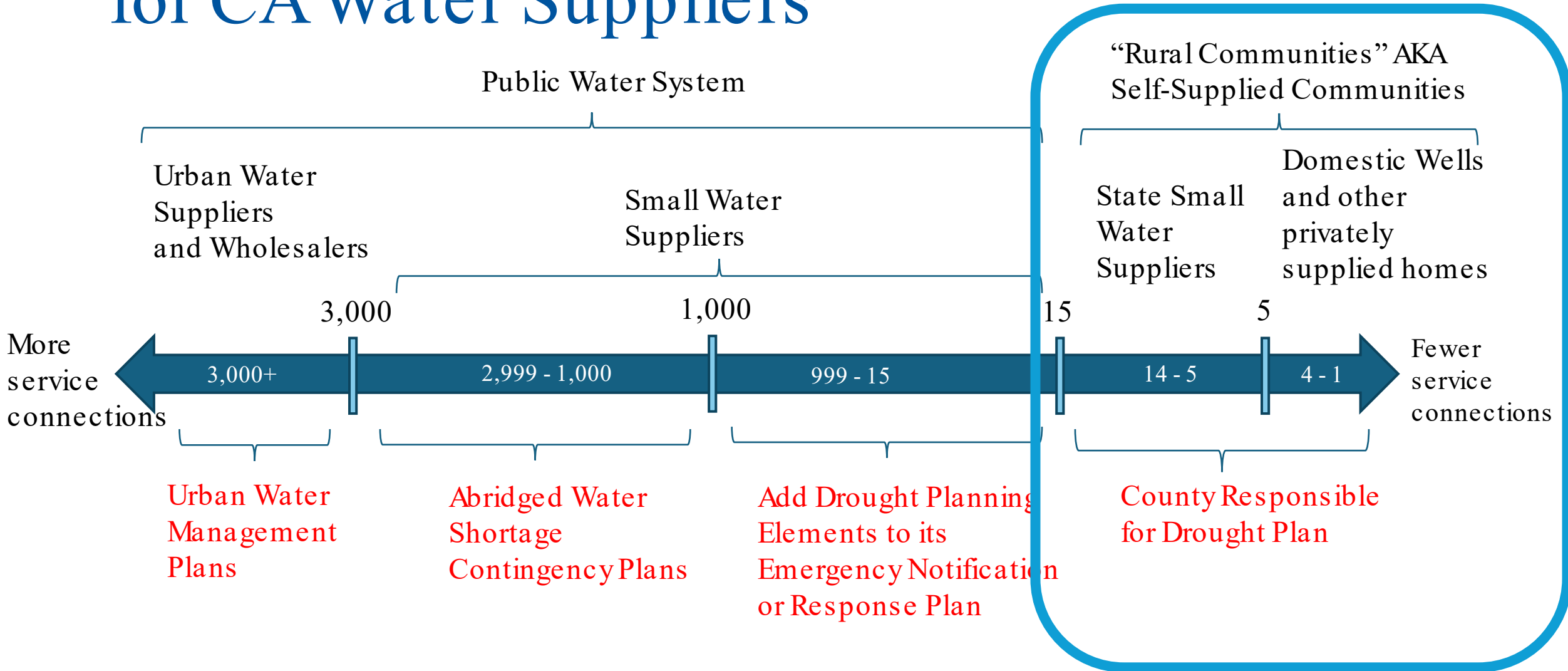
- September 2021, Senate Bill (SB) 552 (Hertzberg) was signed into law
- SB 552 adds new responsibilities and requirements at the local level
- Under SB 552, the California State Legislature identifies counties as the best-suited government entity to provide the needed leadership to improve water resilience for state small water systems and domestic wells
- Intent is to help small water suppliers and rural communities to reduce their risk of inadequate water supply during a drought event



@MADERACOUNTY  
maderacounty.com



# County Role in Context of Drought Planning for CA Water Suppliers





# What are the requirements for Counties?

Each county is required to have the following:

1. A standing drought task force to facilitate drought and water shortage preparedness for state small water systems (serving 5 to 14 connections), domestic wells, and other privately supplied homes within the county's jurisdiction
  - ✓ Madera County has already established a Drought Workgroup (Resolution No 2021-158)
2. Develop a plan demonstrating the potential drought and water shortage risk and proposed interim and long-term solutions for state small water systems and domestic wells within the county
  - ✓ The Madera County Water and Natural Resources department has worked with Zanjero (consultant) between 2022 to 2024 to develop a draft of the drought plan



@MADERACOUNTY  
maderacounty.com





# Outreach Actions

Different online presentations were provided at the Madera County Workgroup meetings to share with stakeholders the different elements of the drought plan

2022:

- ✓ August 19, 2022 - Announcement of Plan Preparation and Invitation to Engage in Plan Development
- ✓ September 16, 2022 - Stakeholder listening session regarding Risk Factors and Tracking Protocols
- ✓ October 21, 2022 - Stakeholder listening session regarding Response Actions

2023:

- ✓ January 20, 2023 - Presentation of Draft Drought Plan to the Drought Workgroup



@MADERACOUNTY  
maderacounty.com





# County Drought Resilience Plan

This plan covers the following\*:

1. Introduction and Background
2. Identification of Drought and Water Shortage Risk for Self- Supplied Communities
3. Small System Consolidation Opportunities
4. Shortage Response Action (Action Plan)
5. Conclusions and Recommendations

\*These are the plan elements that needed to be consider at minimum under SB 552



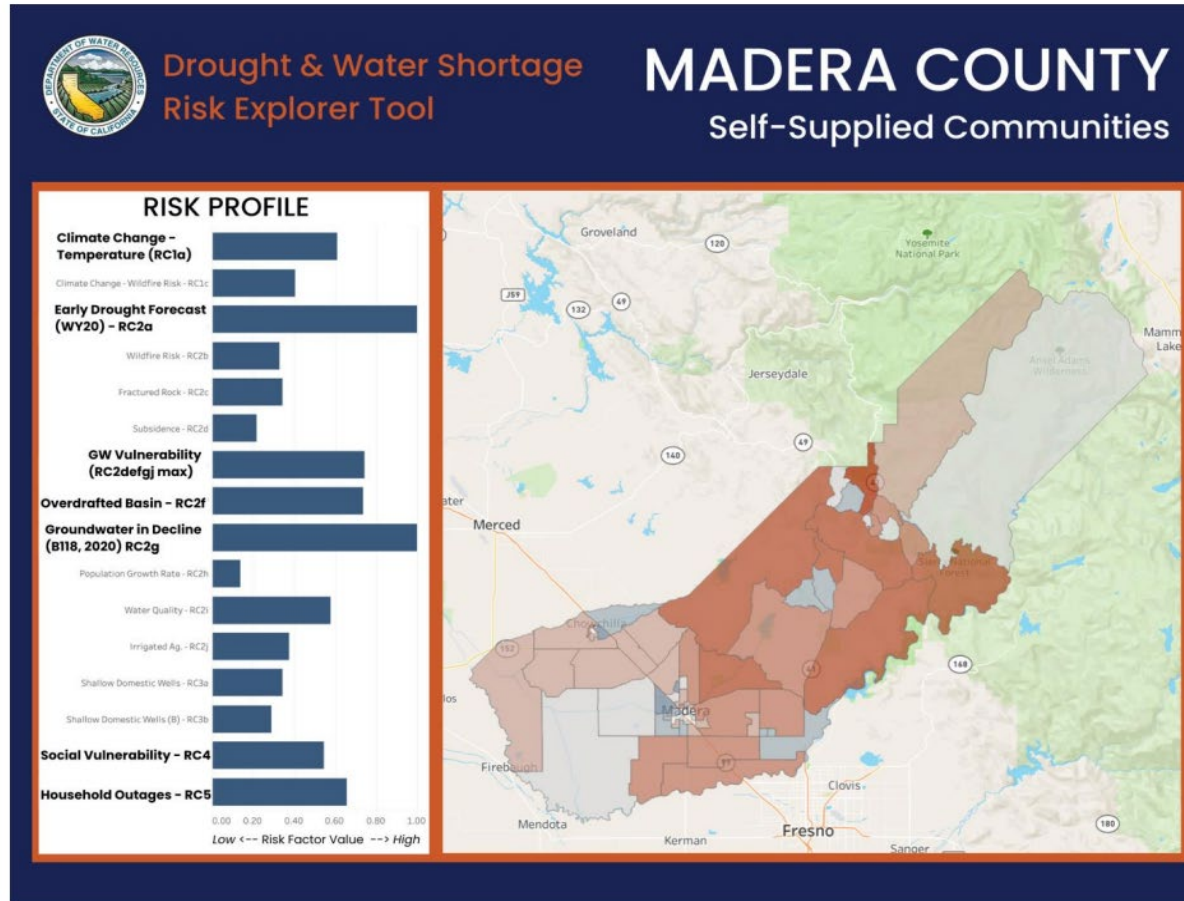
@MADERACOUNTY  
maderacounty.com







# Example of Risk Analysis using State tools (may not reflect local information)



Madera County's population resides on the Valley Floor or in the western foothills of the Sierra Nevada.

- On the Valley Floor, alluvial aquifers are used for agricultural, urban and domestic uses.
- In the Foothills communities, individuals rely on wells drilled in fractured rock.



@MADERACOUNTY  
maderacounty.com







# Action Plan:

## Tracking and response framework will help the County focus resources and tailor responses

Drought Stage	TRACKING MEASURE			Response Actions
	Groundwater Decline	Dry Wells Reports	Current Year Hydrology	
<b>0</b>	Less than 15 feet	Less than 4 reports	More than 80% of average San Joaquin River runoff	Baseline Actions
<b>1</b>	15 - 30 feet	5 - 10 reports	50 - 80% of average San Joaquin River runoff	Moderate Actions
<b>2</b>	More than 30 feet	More than 11 reports	Less than 50% of average San Joaquin River runoff	Severe Actions

- The County will annually monitor factors in late spring for specific geographic subareas
- The County would evaluate the “Drought Stage” for the subarea and trigger defined actions.
- Actions would be targeted to the local area to enable efficient focus to areas at more risk during a given year.

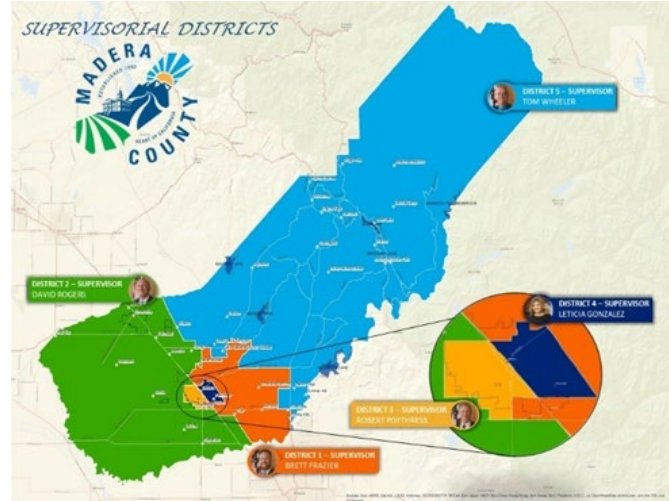


@MADERACOUNTY  
maderacounty.com





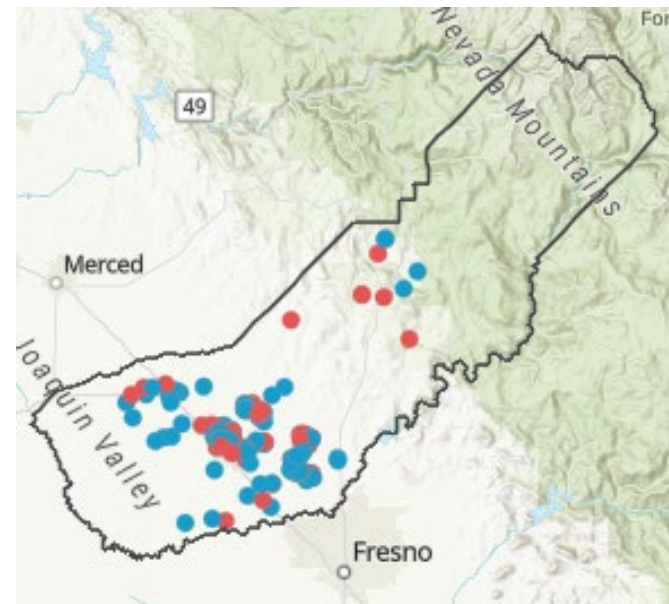
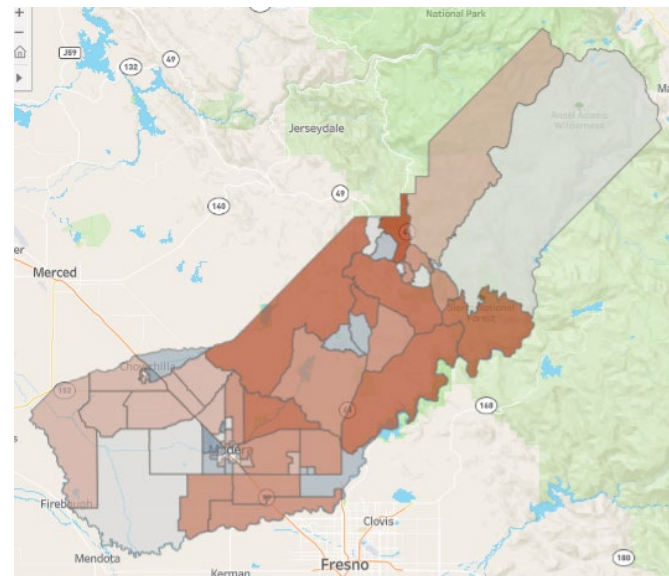
# Potential Geographic Focus



Option 1: Board of Supervisors Districts

Option 2: Census Block Groups

Option 3: Radius Around Flagged Criteria



@MADERACOUNTY  
maderacounty.com





# Example Response Actions

- Initiate access to state funding
- Contract with partners to implement solutions (bottle water, well testing)
- Targeted outreach
- Seek state/federal emergency proclamations to enable actions
- Trigger mutual aid agreements

(Full discussion of response actions by drought stage are included in the Drought Plan)



@MADERACOUNTY  
maderacounty.com





# Staff Recommendation

- Adopt the Drought Plan
- Direct staff to provide a drought update



@MADERACOUNTY  
maderacounty.com

