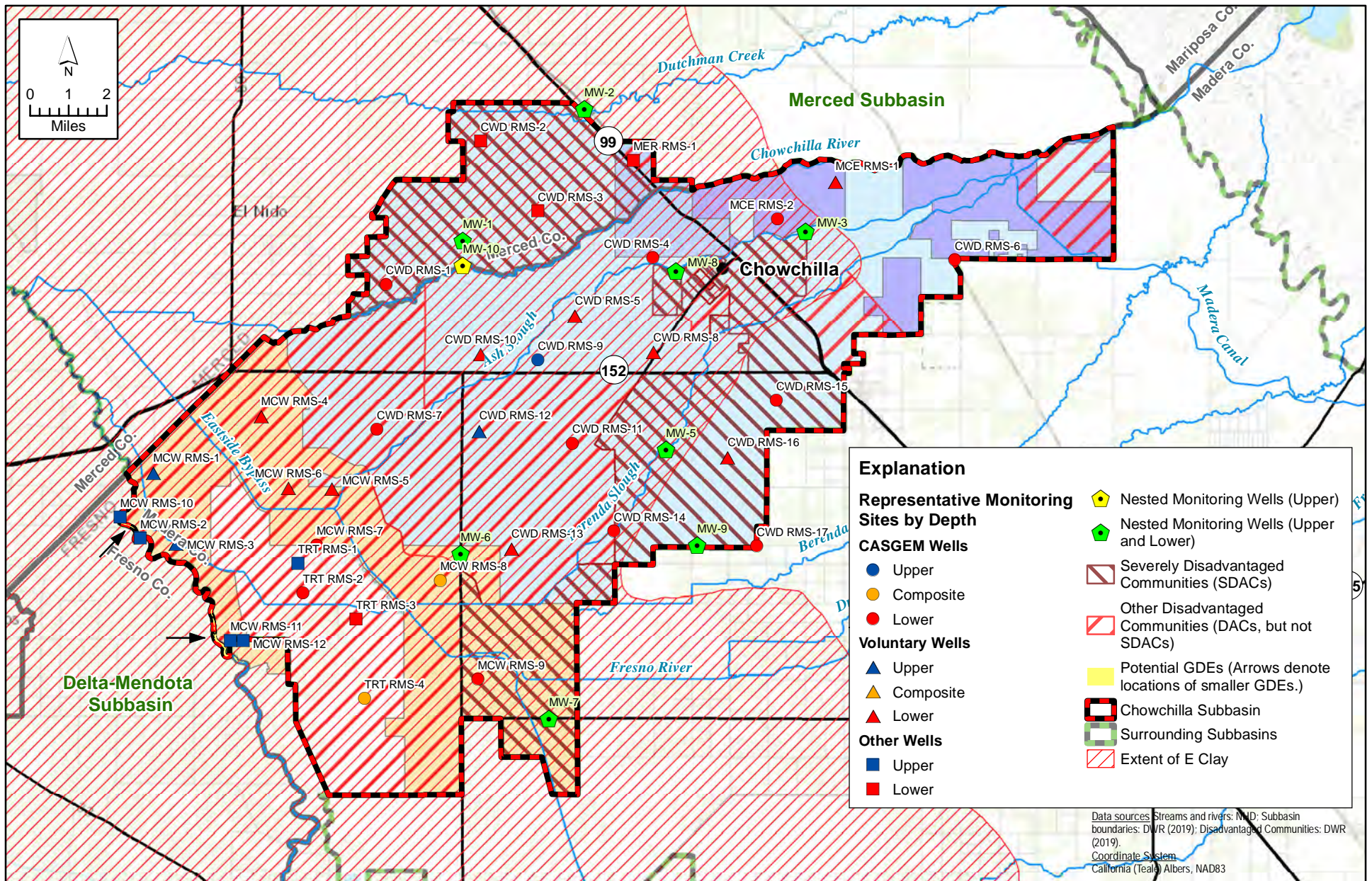


CHAPTER 3 SUSTAINABLE MANAGEMENT CRITERIA

3.6 Selected Figures

The following figures can be found after this page: Figures 3-3 to 3-8, and 3-10 to 3-13.

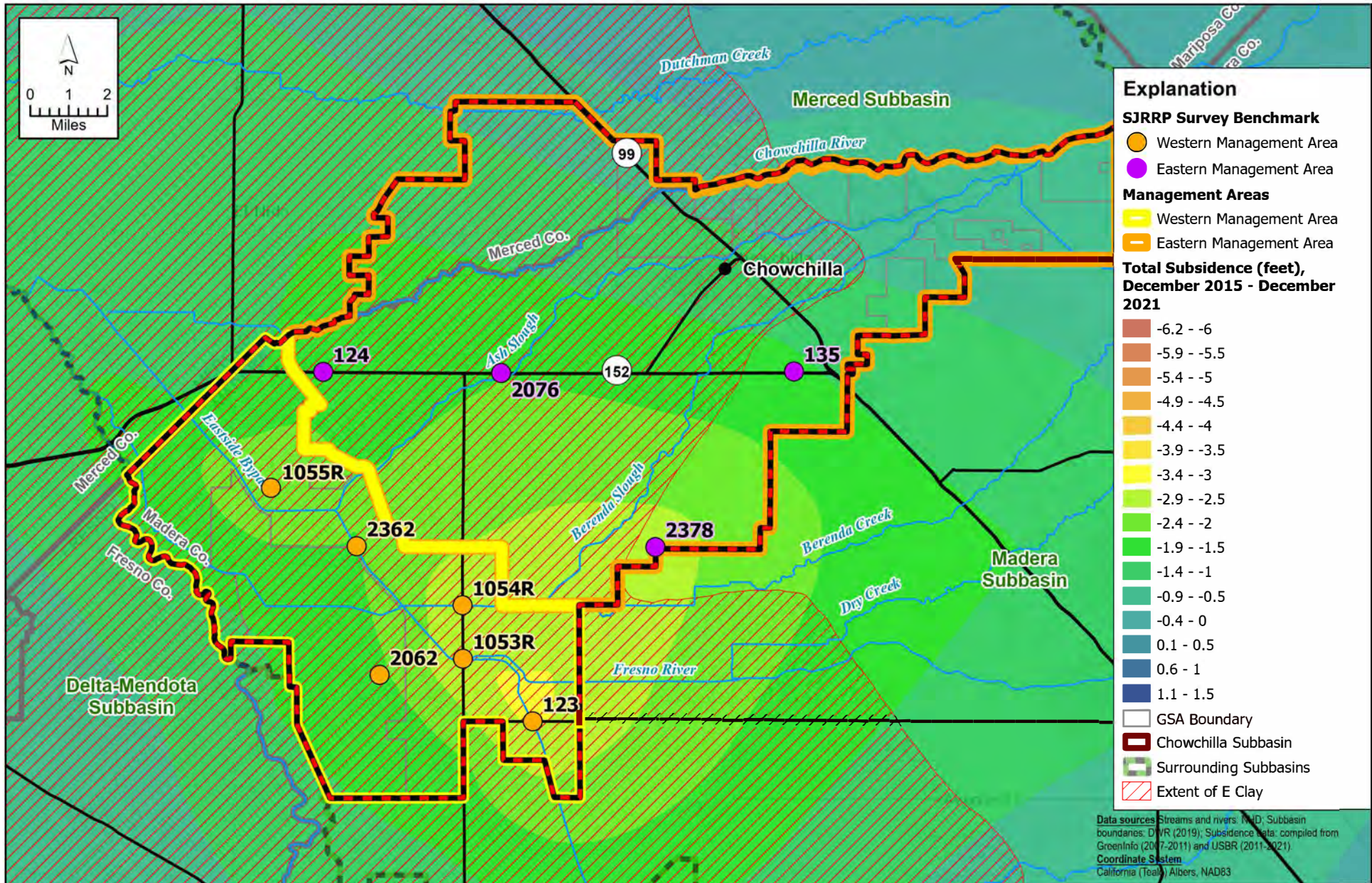


\\SERVER-01\Clerical\2018\18-017 Chowchilla GSP Development\GIS\Map files\Report Figures\Figure 3-1 Chowchilla Subbasin Proposed Sustainability Indicator Wells.mxd



FIGURE 3-3
Proposed Groundwater Level Sustainability Indicator
Representative Monitoring Sites

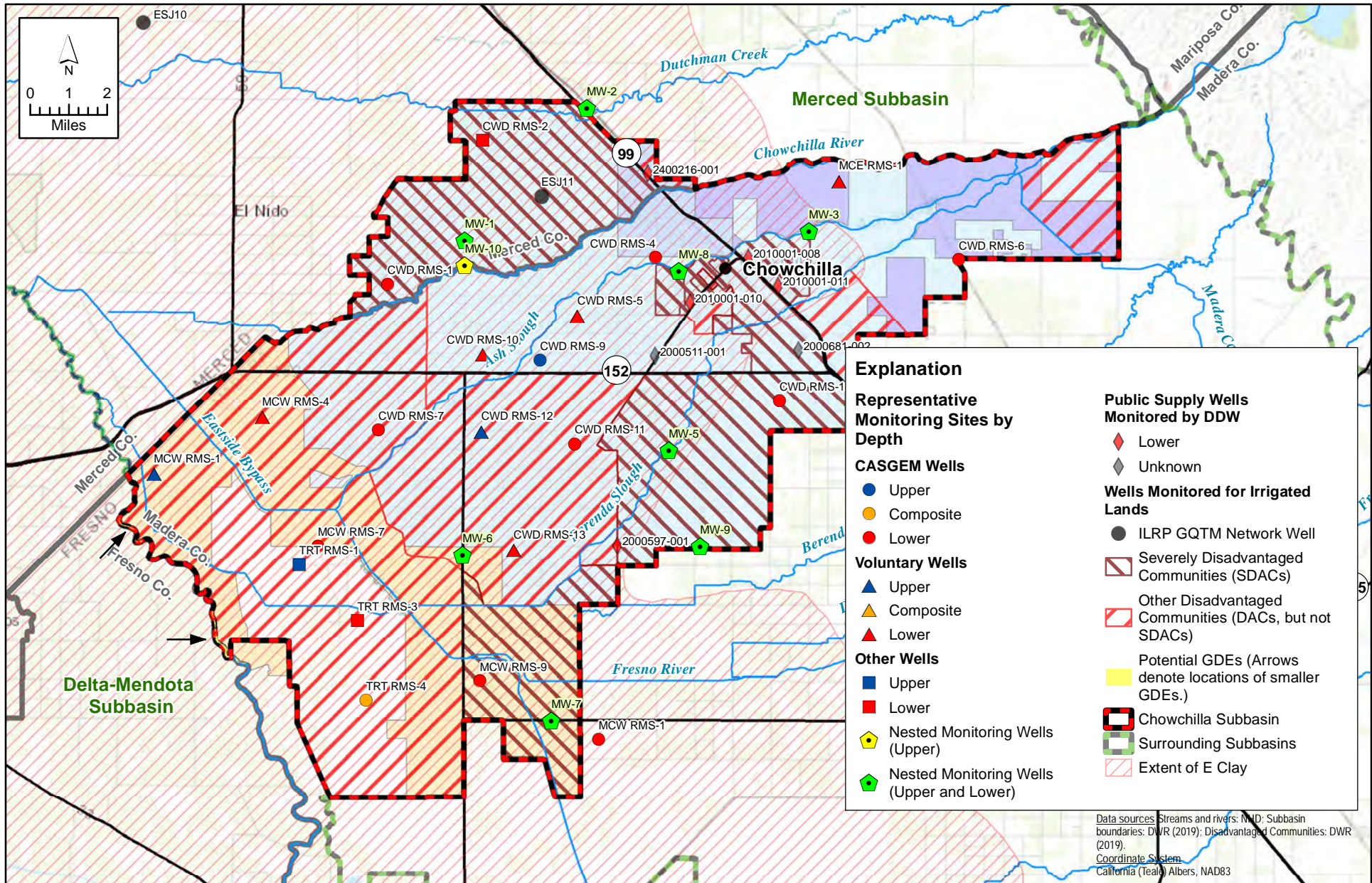
Chowchilla Subbasin
Groundwater Sustainability Plan



X:\2021\21-166 Davids Engineering - Chowchilla Subbasin GSP DWR Consultation Letter\GIS\CHOW_GSP_UPDATE\CHOW_GSP_UPDATE.aprx



FIGURE 3-4
Proposed Subsidence Sustainability Indicator
Representative Monitoring Sites
Chowchilla Subbasin
Groundwater Sustainability Plan

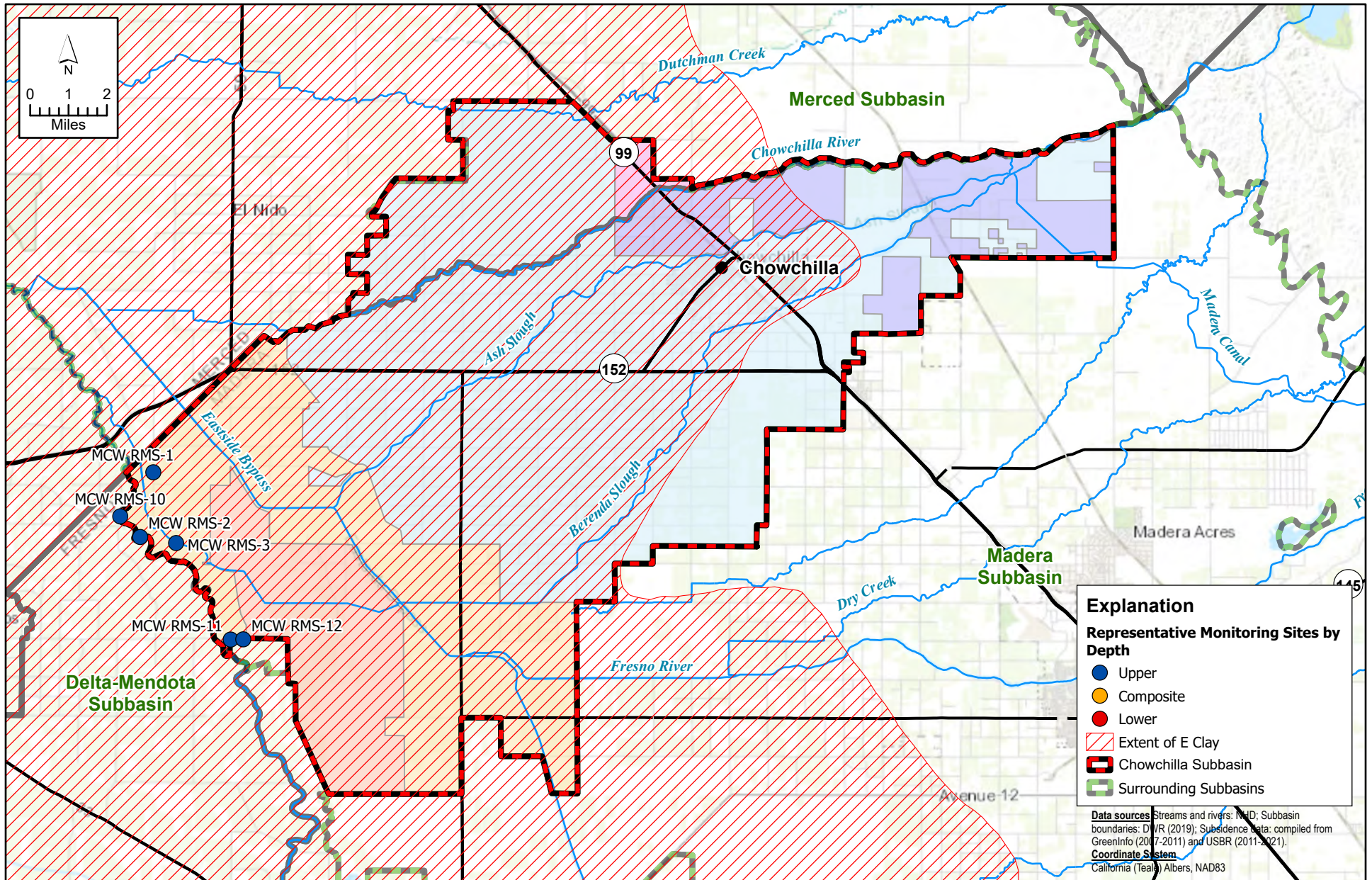


\\SERVER-01\Clerical\2018\18-017 Chowchilla GSP Development\GIS\Map files\Report Figures\Figure 3-2 Chowchilla Subbasin Proposed Groundwater Quality Indicator Wells.mxd



FIGURE 3-5
Proposed Groundwater Quality Sustainability Indicator
Representative Monitoring Sites

Chowchilla Subbasin
Groundwater Sustainability Plan

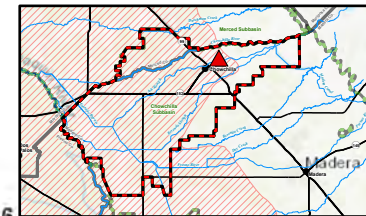


X:\2021\21-166 Davids Engineering - Chowchilla Subbasin GSP DWR Consultation Letter\GIS\CHOW_GSP_UPDATE\CHOW_GSP_UPDATE.aprx



FIGURE 3-6
Proposed Interconnected Surface Water Sustainability Indicator
Representative Monitoring Sites

Chowchilla Subbasin
Groundwater Sustainability Plan



Well Name: MCE RMS-2
 Depth Zone: Lower
 Subbasin: Chowchilla
 GSE (ft, msl): 272

Total Depth (ft bgs): 466
 Perf. Top (ft bgs): 218
 Perf. Bottom (ft bgs): 464
 Top Model Layer: 4
 Bottom Model Layer: 4

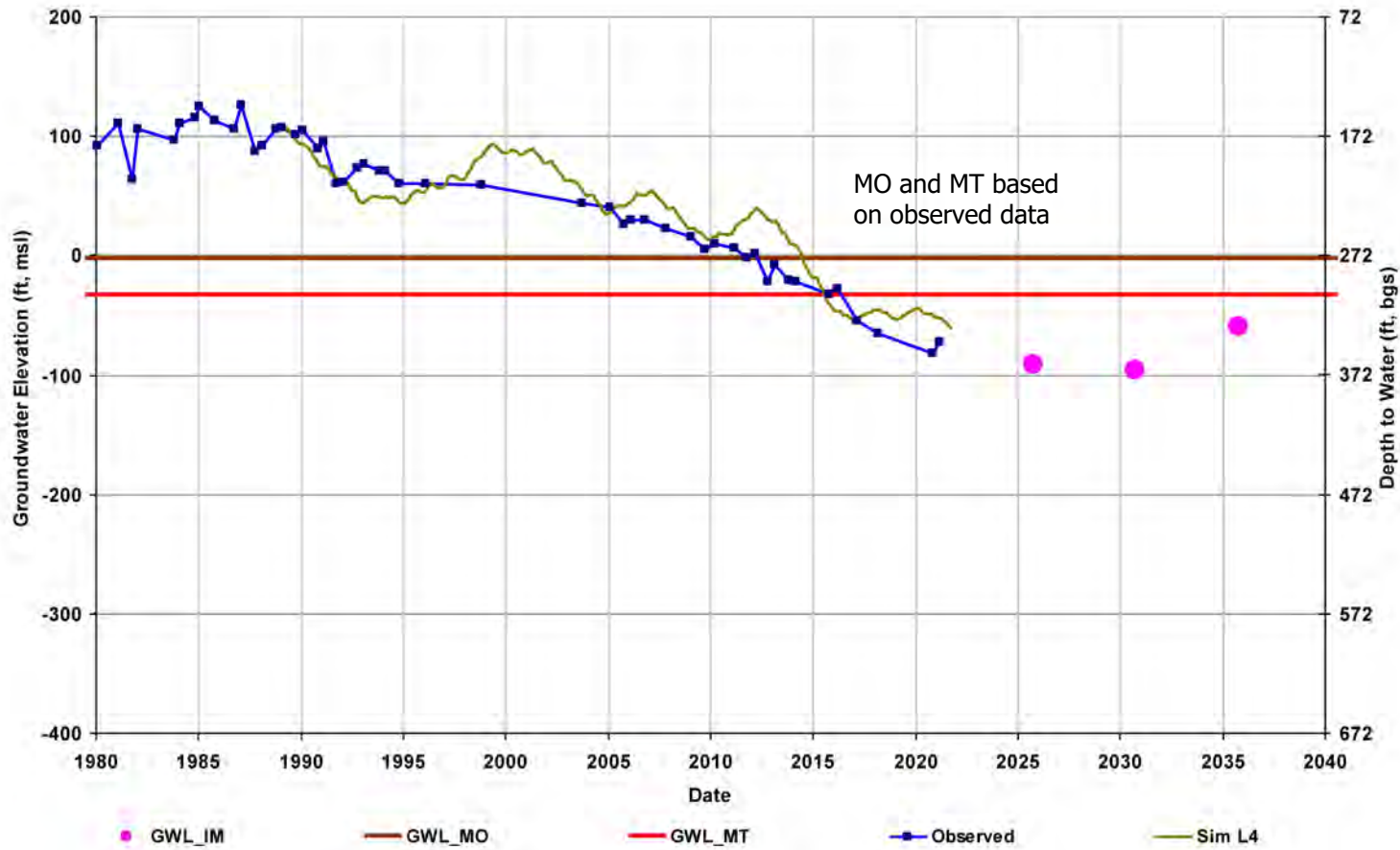
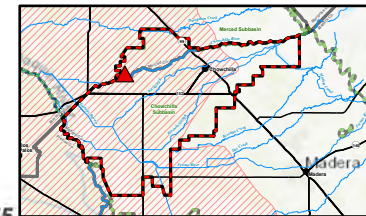


FIGURE 3-7A
Example Groundwater Level Hydrograph with
Observed Fall 2015 Data - MCE RMS-2



Well Name: CWD RMS-1
 Depth Zone: Lower
 Subbasin: Chowchilla
 GSE (ft, msl): 171

Total Depth (ft bgs): 275
 Perf. Top (ft bgs): 160
 Perf. Bottom (ft bgs): 275
 Top Model Layer: 4
 Bottom Model Layer: 4

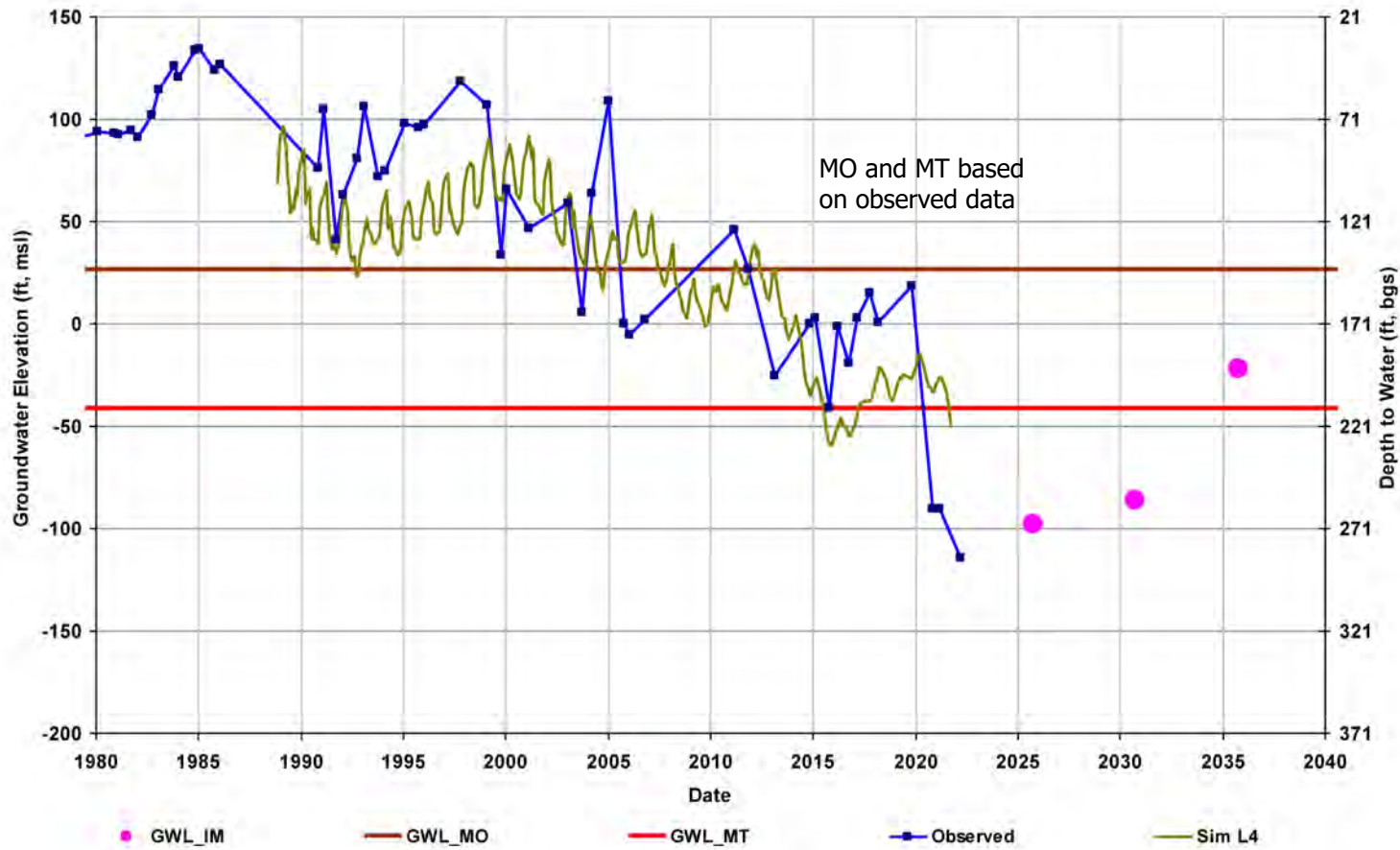
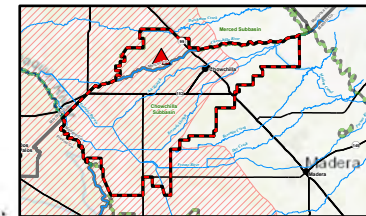
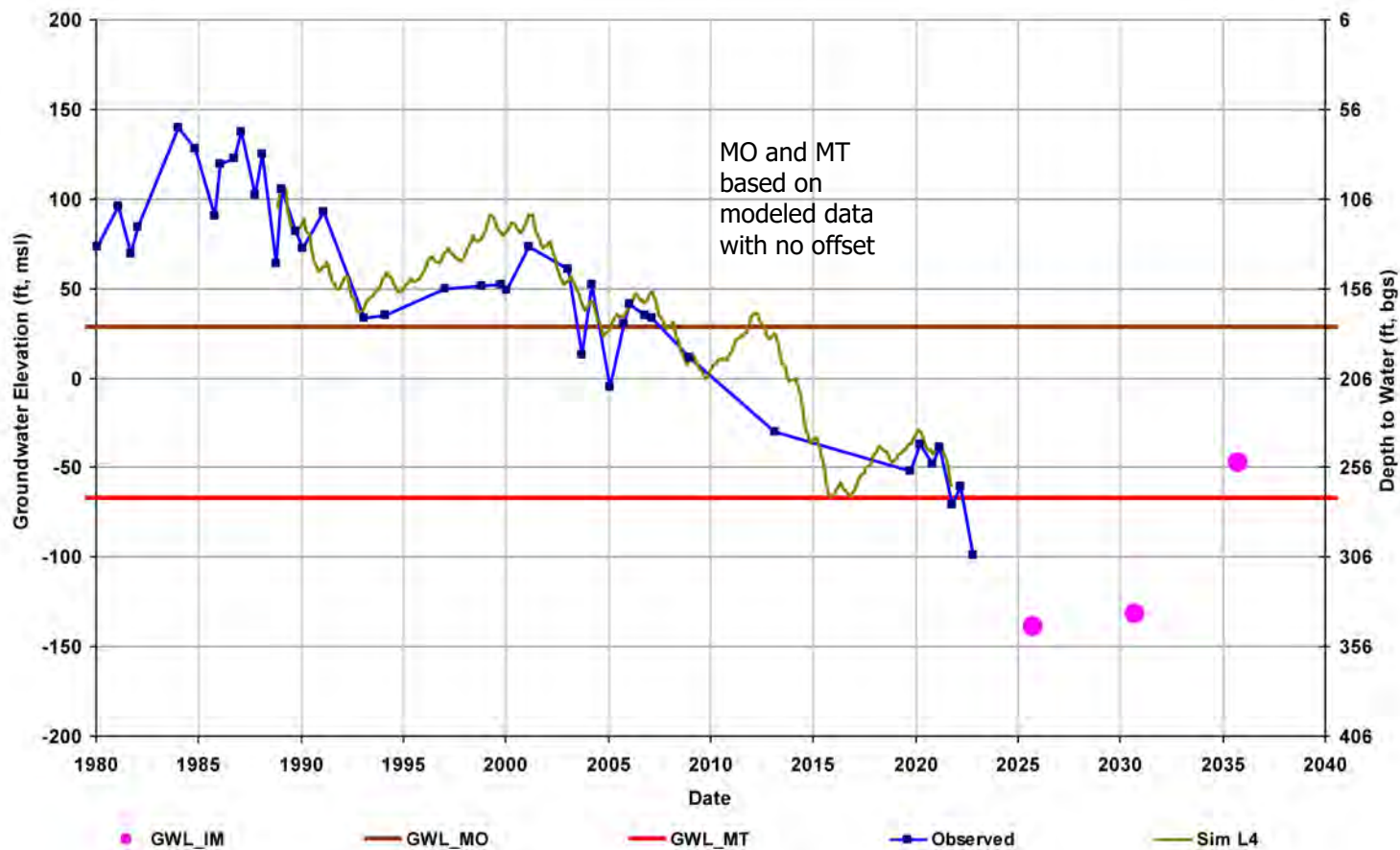


FIGURE 3-7B
Example Groundwater Level Hydrograph with
Observed Fall 2015 Data - CWD RMS-1



Well Name: CWD RMS-3
 Depth Zone: Lower
 Subbasin: Chowchilla
 GSE (ft, msl): 206

Total Depth (ft bgs):
 Perf. Top (ft bgs):
 Perf. Bottom (ft bgs):
 Top Model Layer: 4
 Bottom Model Layer: 4

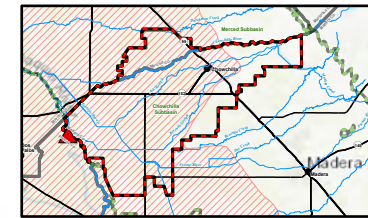


X:\2021\21-166 Davids Engineering - Chowchilla Subbasin GSP DWR Consultation Letter\GIS\CHOW_GSP_UPDATE\CHOW_GSP_UPDATE.aprx



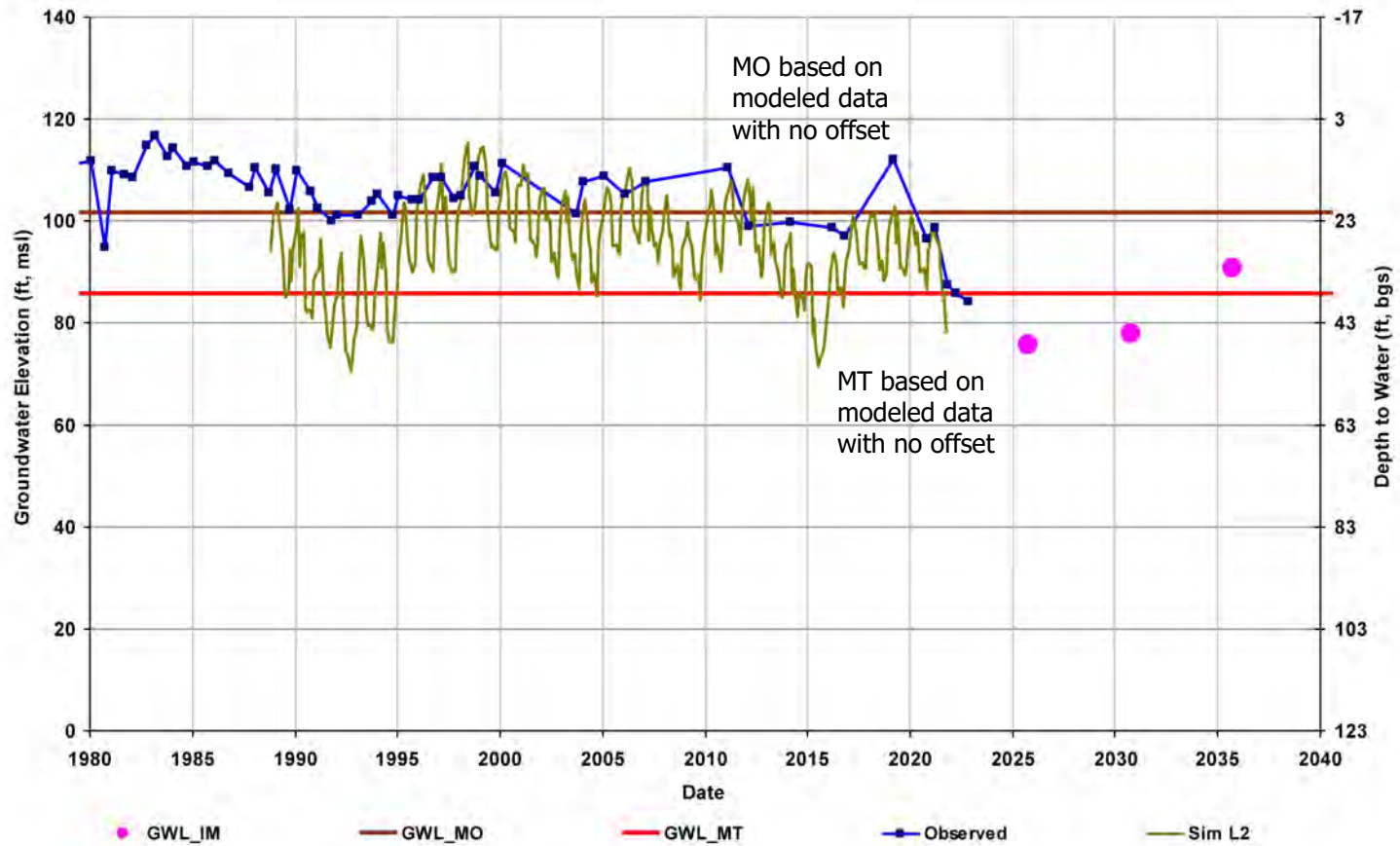
FIGURE 3-8A
Example Groundwater Level Hydrograph without
Observed Fall 2015 Data - CWD RMS-3

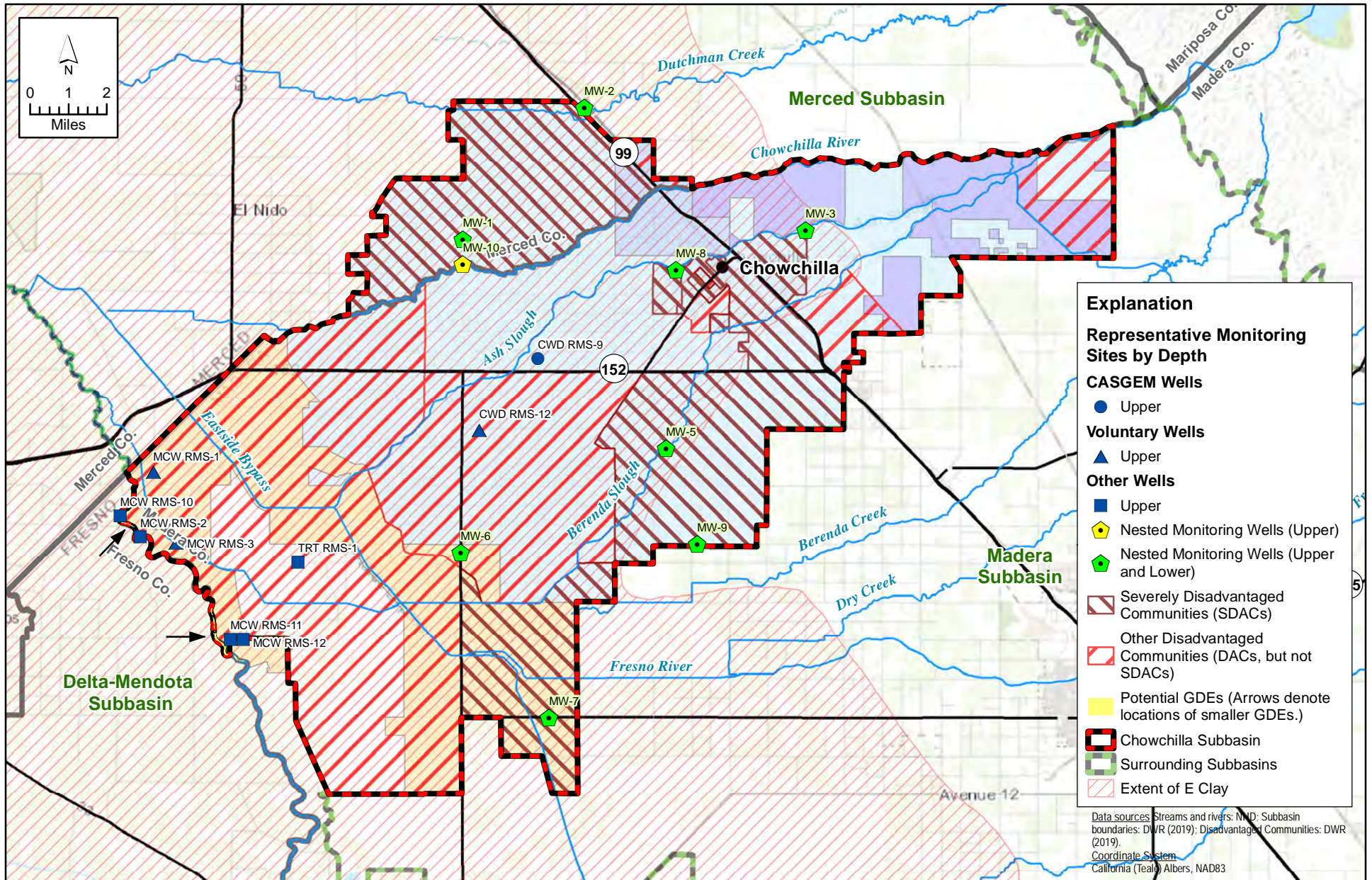
Chowchilla Subbasin
Groundwater Sustainability Plan



Well Name: MCW RMS-2
 Depth Zone: Upper
 Subbasin: Chowchilla
 GSE (ft, msl): 123

Total Depth (ft bgs):
 Perf. Top (ft bgs):
 Perf. Bottom (ft bgs):
 Top Model Layer: 2
 Bottom Model Layer: 2



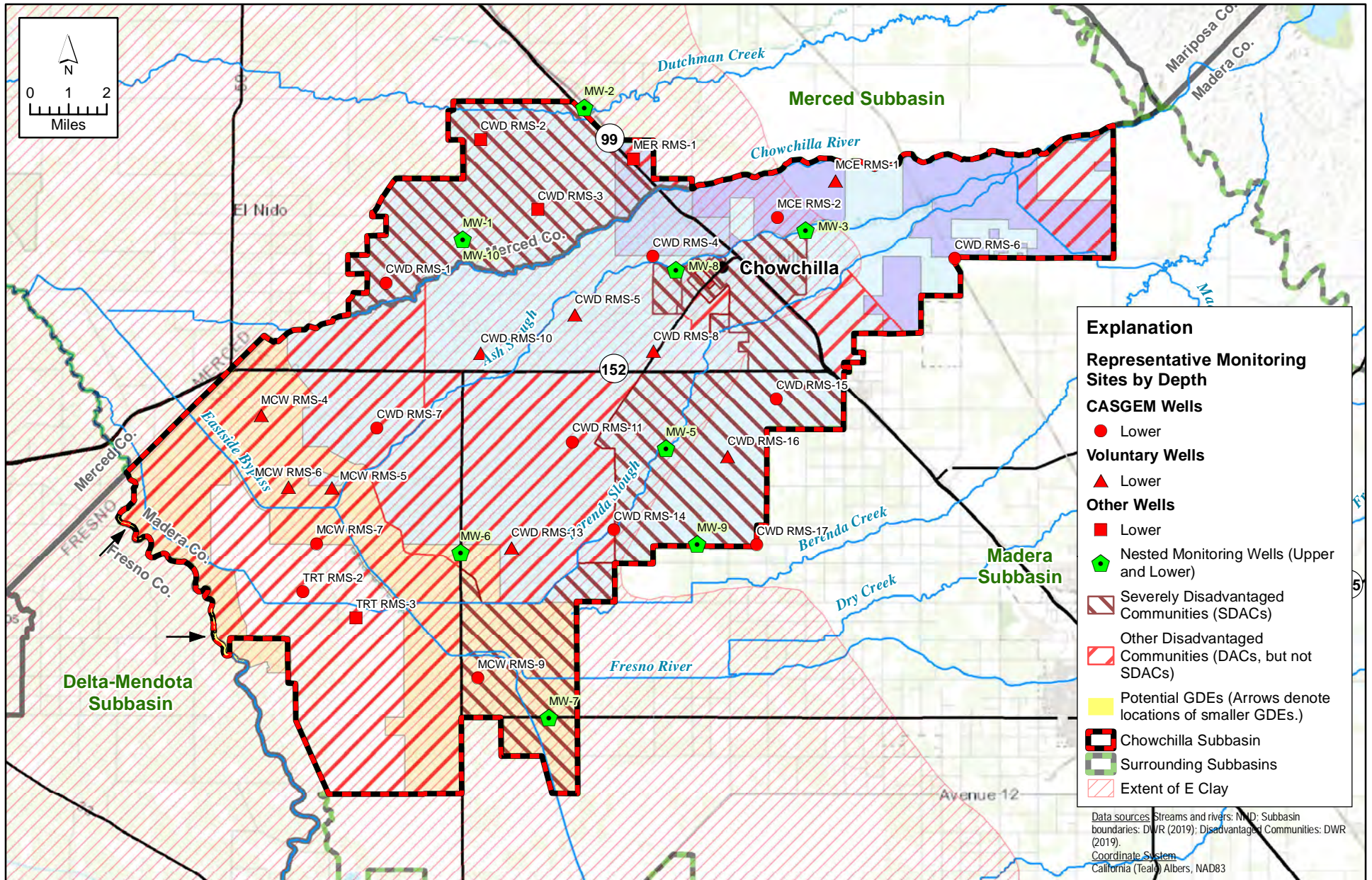


\\SERVER-01\Clerical\2018\18-017 Chowchilla GSP Development\GIS\Map files\Report Figures\Figure 3-6 Chowchilla Subbasin Proposed Sustainability Indicator Wells Upper.mxd



FIGURE 3-10
Proposed Groundwater Level Sustainability Indicator
Representative Monitoring Sites - Upper Aquifer

Chowchilla Subbasin
Groundwater Sustainability Plan

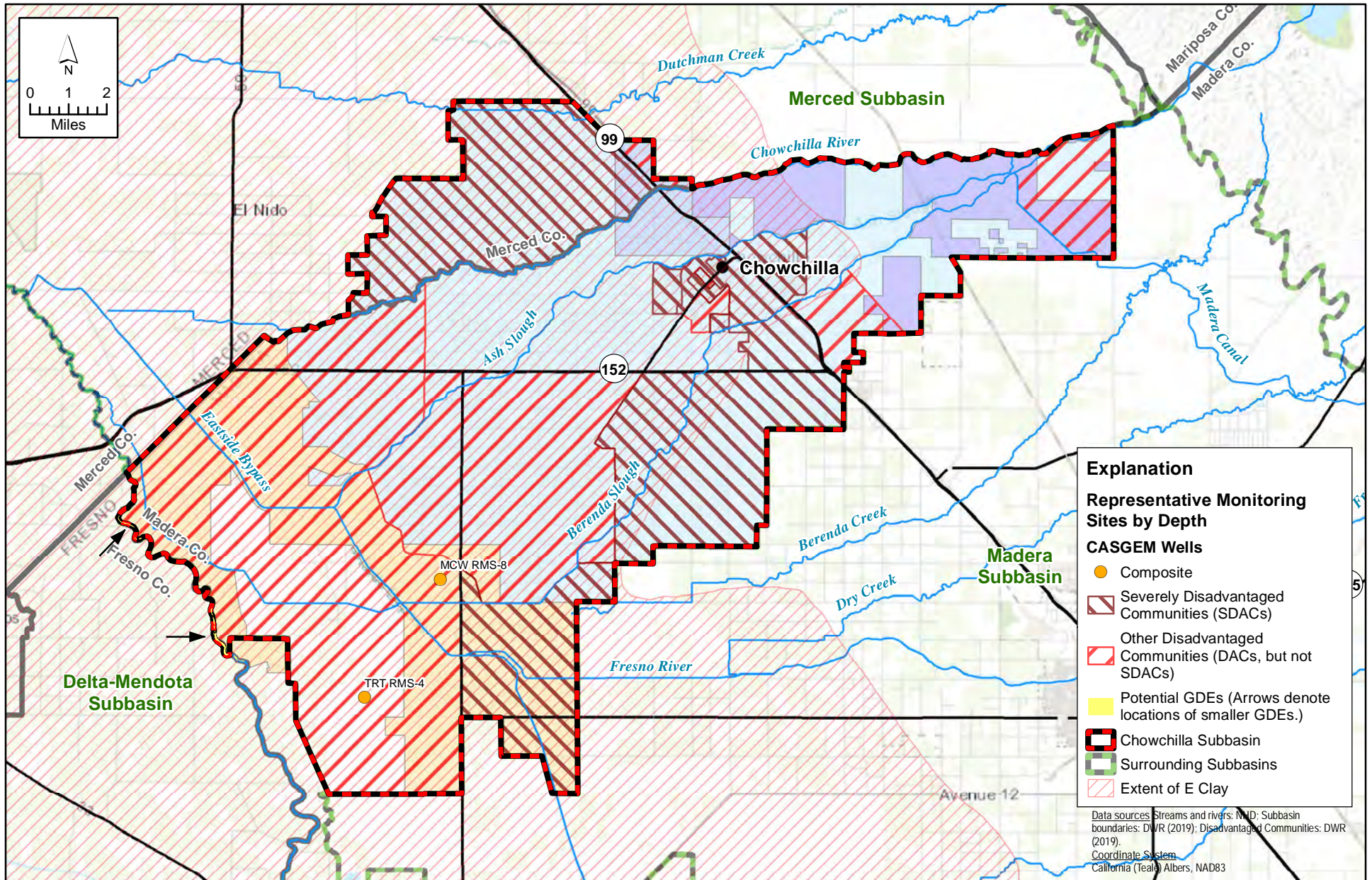


\\SERVER-01\Clerical\2018\18-017 Chowchilla GSP Development\GIS\Map files\Report Figures\Figure 3-7 Chowchilla Subbasin Proposed Sustainability Indicator Wells Lower.mxd



FIGURE 3-11
Proposed Groundwater Level Sustainability Indicator
Representative Monitoring Sites - Lower Aquifer

Chowchilla Subbasin
Groundwater Sustainability Plan

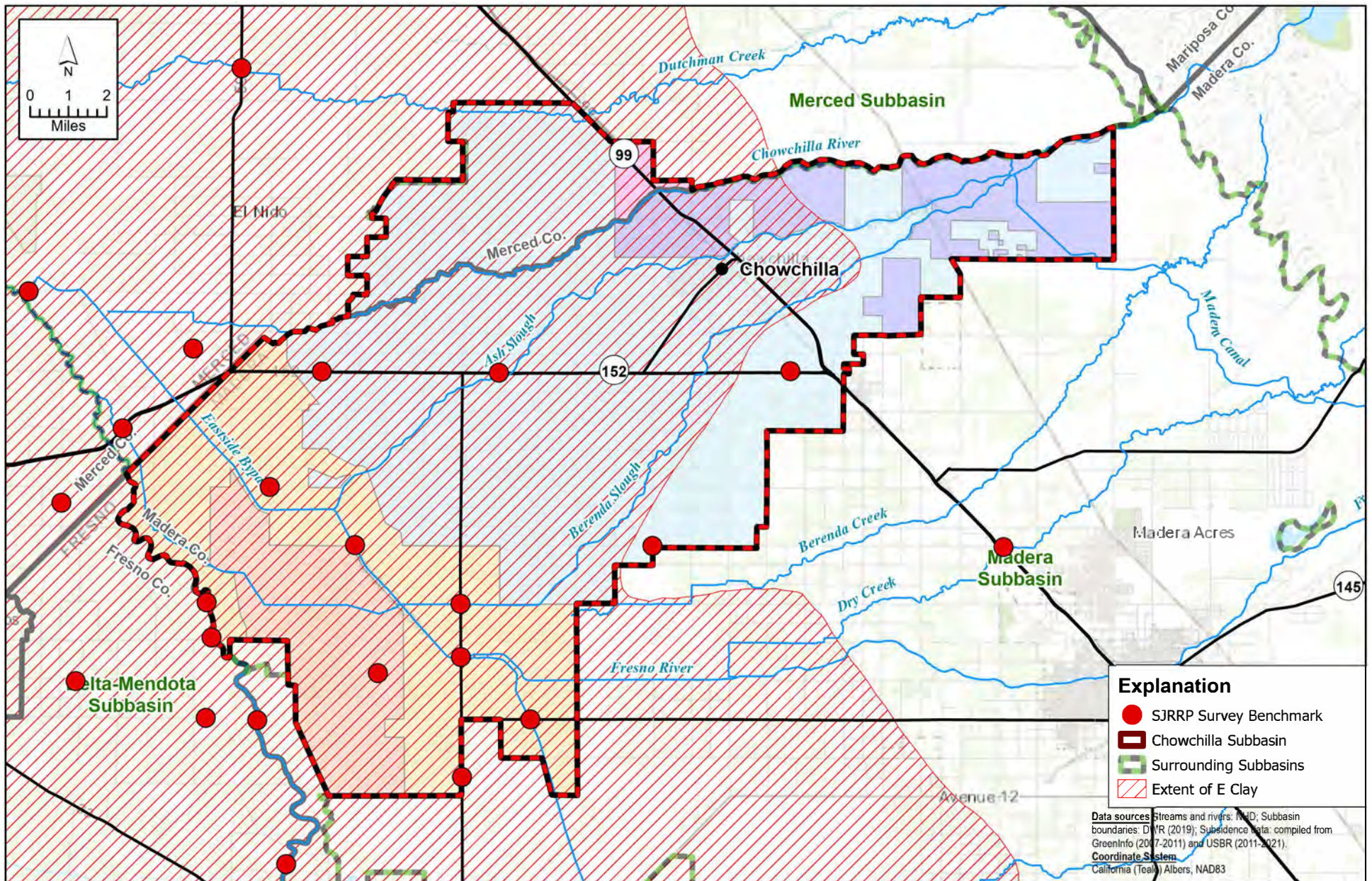


\\SERVER-01\Clerical\2018\18-017 Chowchilla GSP Development\GIS\Map files\Report Figures\Figure 3-8 Chowchilla Subbasin Proposed Sustainability Indicator Wells Composite.mxd



FIGURE 3-12
Proposed Groundwater Level Sustainability Indicator
Representative Monitoring Sites - Composite Wells

Chowchilla Subbasin
Groundwater Sustainability Plan



X:\2021\21-166 Davids Engineering - Chowchilla Subbasin GSP DWR Consultation Letter\GIS\CHOW_GSP_UPDATE\CHOW_GSP_UPDATE.aprx

FIGURE 3-13

Proposed Subsidence Monitoring Network

