

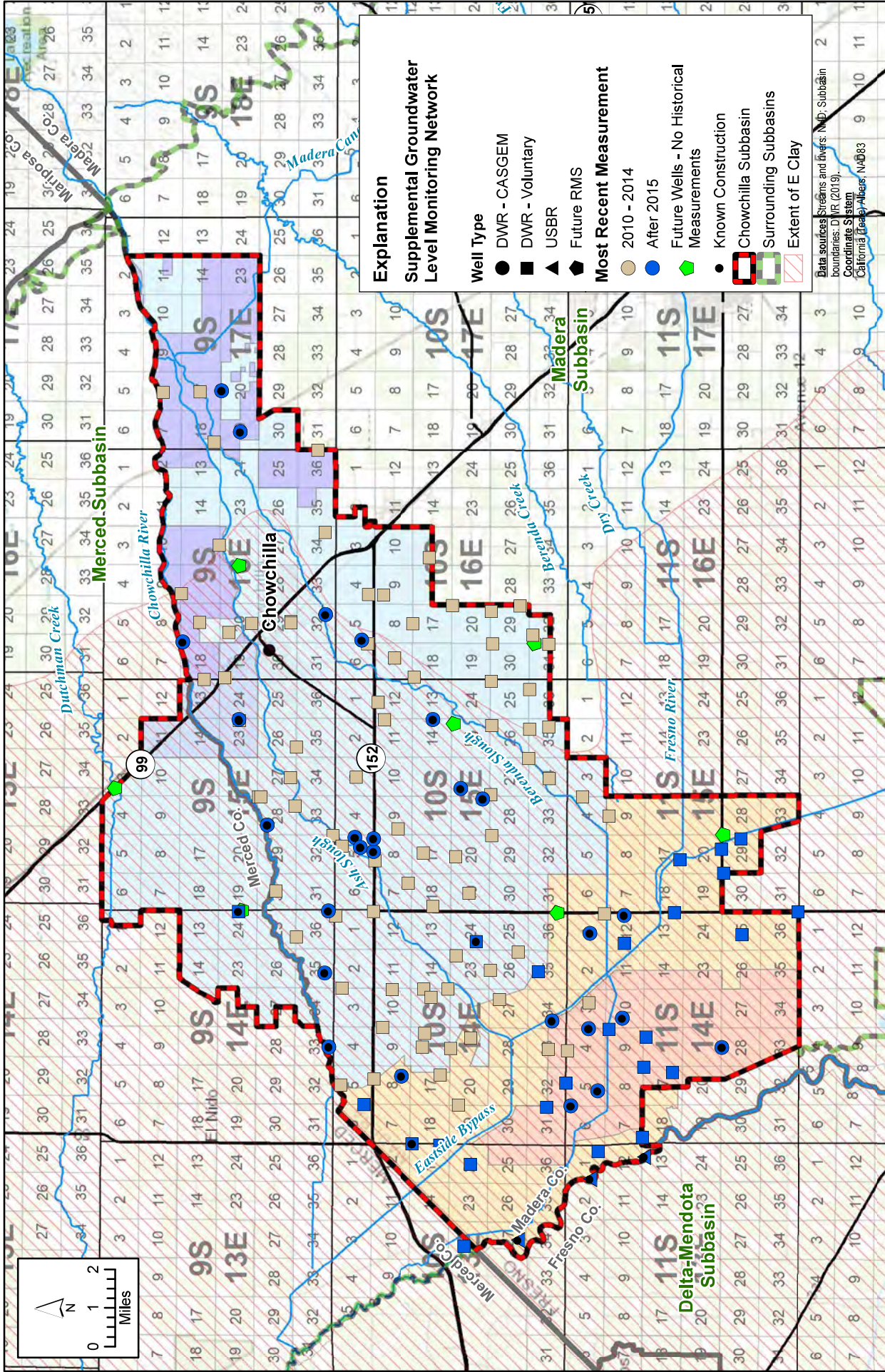
APPENDIX 3.G. MONITORING NETWORK

Prepared as part of the
Groundwater Sustainability Plan
Chowchilla Subbasin

January 2020

GSP Team:

Davids Engineering, Inc
Luhdorff & Scalmanini
ERA Economics
Stillwater Sciences and
California State University, Sacramento



X:\2018\18-017 Chowchilla GSP Development\GIS\Map files\Report Figures\Figure 3-D-1 Chowchilla Subbasin Supplemental Groundwater Level Monitoring Network.mxd

FIGURE 3.G-1

Supplemental Groundwater Level Monitoring Network

Table 3.G-1 - Supplemental Groundwater Level Monitoring Network, Chowchilla Subbasin

Well ID	Well Type	Latitude	Longitude	T/R/S	Well Depth	Screen Interval	Earliest Groundwater Level Measurement Date	Most Recent Groundwater Level Measurement Date	Count of Groundwater Level Measurements
09S14E24H	Voluntary	37.1343	-120.3831	9S/14E/24	900	324-828	11/3/2015	3/14/2019	8
09S14E33L	CASGEM	37.1001	-120.4467	9S/14E/33	290	265-285	10/28/2015	3/14/2019	8
09S14E35P	CASGEM	37.1018	-120.4120	9S/14E/35	452	257-447	5/9/2019	5/9/2019	0
09S14E36C001M	Voluntary	37.1124	-120.3952	9S/14E/36			2/9/1967	3/9/2011	83
09S14E36R1	CASGEM	37.1004	-120.3828	9S/14E/36	490	130-270	5/10/2019	5/10/2019	0
09S15E23J	CASGEM	37.1343	-120.2929	9S/15E/23	291		10/17/2016	3/14/2019	6
09S15E23J2	Voluntary	37.1341	-120.2935	9S/15E/23	291	290.5-291	2/23/1968	2/19/2014	85
09S15E27Q001M	Voluntary	37.1149	-120.3202	9S/15E/27			2/25/2013	2/18/2014	2
09S15E28A001M	Voluntary	37.1268	-120.3293	9S/15E/28			10/29/1935	2/22/2010	54
09S15E28A002M	Voluntary	37.1260	-120.3293	9S/15E/28			2/15/1963	2/18/2014	74
09S15E28C	CASGEM	37.1236	-120.3427	9S/15E/28	736	502-722	5/11/2019	5/11/2019	0
09S15E28R001M	Voluntary	37.1132	-120.3335	9S/15E/28			7/6/1939	2/18/2014	133
09S15E30G001M	Voluntary	37.1202	-120.3735	9S/15E/30			11/8/1939	2/22/2010	127
09S15E32R001M	Voluntary	37.0988	-120.3474	9S/15E/32			10/24/1952	2/22/2010	74
09S15E35C001M	Voluntary	37.1127	-120.3057	9S/15E/26			3/4/2013	2/18/2014	2
09S16E15Q001M	Voluntary	37.1418	-120.2110	9S/16E/15			2/6/1980	2/20/2014	56
09S16E16D001M	Voluntary	37.1560	-120.2338	9S/16E/16			1/30/1987	3/5/2010	41
09S16E17F001M	Voluntary	37.1491	-120.2474	9S/16E/17			2/6/1980	2/20/2014	58
09S16E18A	CASGEM	37.1554	-120.2565	9S/16E/18	800	320-762	10/30/2015	3/14/2019	8
09S16E18M001M	Voluntary	37.1474	-120.2741	9S/16E/18			2/6/1980	2/28/2011	56
09S16E19D001M	Voluntary	37.1396	-120.2732	9S/16E/19			2/25/2013	2/19/2014	2
09S16E20E001M	Voluntary	37.1382	-120.2521	9S/16E/20			10/14/1964	2/20/2014	82
09S16E20P002M	Voluntary	37.1296	-120.2477	9S/16E/20			3/7/1969	2/20/2014	83
09S16E29Q001M	Voluntary	37.1149	-120.2468	9S/16E/29			10/10/1941	2/20/2014	49
09S16E29Q002M	Voluntary	37.1149	-120.2474	9S/16E/29			2/21/1958	2/28/2011	73
09S16E32Q	CASGEM	37.1019	-120.2434	9S/16E/32	400	200-400	10/28/2015	3/14/2019	8
09S16E34J001M	Voluntary	37.1021	-120.2049	9S/16E/34			12/3/1959	2/20/2014	106
09S16E36J001M	Voluntary	37.1049	-120.1663	9S/16E/36			11/3/1952	2/20/2014	104
09S17E08F001M	Voluntary	37.1630	-120.1391	9S/17E/08			2/13/2013	2/19/2014	2
09S17E17F001M	Voluntary	37.1491	-120.1388	9S/17E/17			2/6/1980	3/1/2011	55
09S17E18N002M	Voluntary	37.1438	-120.1624	9S/17E/18			2/6/1980	3/1/2011	44
09S17E19L001M	CASGEM	37.1341	-120.1577	9S/17E/19	648	240-620	10/9/1964	3/14/2019	99
09S17E20C	CASGEM	37.1411	-120.1384	9S/17E/20	720	200-720	10/29/2015	3/14/2019	8
10S13E13J001M	Voluntary	37.0582	-120.4927	10S/13E/13			2/8/2012	3/11/2019	9
10S13E22F002M	Voluntary	37.0489	-120.5400	10S/13E/22			1/22/1999	10/16/2018	11
10S13E24L001M	Voluntary	37.0468	-120.5016	10S/13E/24			2/12/1964	3/8/2017	89
10S14E01A001M	Voluntary	37.0977	-120.3852	10S/14E/01			3/1/2013	2/28/2014	2
10S14E01R002M	Voluntary	37.0835	-120.3829	10S/14E/02			2/22/1968	2/28/2014	82
10S14E03A001M	Voluntary	37.0952	-120.4191	10S/14E/03			10/1/1928	2/11/2014	138
10S14E05C003M	Voluntary	37.0955	-120.4646	10S/14E/05			10/6/1976	2/11/2014	66
10S14E06R001M	Voluntary	37.0868	-120.4738	10S/14E/06			10/8/1976	3/11/2019	66
10S14E08B003M	Voluntary	37.0830	-120.4616	10S/14E/08			7/21/1961	2/26/2010	157
10S14E08D	CASGEM	37.0728	-120.4603	10S/14E/08	410	230-360	10/29/2015	3/15/2019	8
10S14E09A003M	Voluntary	37.0799	-120.4374	10S/14E/09			2/22/1968	2/12/2014	81
10S14E10H001M	Voluntary	37.0763	-120.4196	10S/14E/10			2/21/2013	2/12/2014	2
10S14E15H001M	Voluntary	37.0646	-120.4193	10S/14E/15			10/29/1935	2/12/2014	135
10S14E15J001M	Voluntary	37.0618	-120.4232	10S/14E/15			2/1/1999	2/26/2010	17
10S14E15R001M	Voluntary	37.0555	-120.4193	10S/14E/15			11/30/1937	3/1/2011	131
10S14E16F002M	Voluntary	37.0649	-120.4466	10S/14E/16			10/14/1964	2/12/2014	85
10S14E16H001M	Voluntary	37.0641	-120.4402	10S/14E/16			12/28/1950	2/12/2014	110
10S14E17J001M	Voluntary	37.0582	-120.4596	10S/14E/17			2/6/1980	2/12/2014	58
10S14E18D	Voluntary	37.0688	-120.4922	10S/13E/13	516	265-506	10/29/2015	3/15/2019	8
10S14E19A002M	Voluntary	37.0513	-120.4738	10S/14E/19			2/6/1980	2/11/2014	58
10S14E21C003M	Voluntary	37.0543	-120.4471	10S/14E/21			2/6/1980	3/1/2013	58
10S14E21G001M	Voluntary	37.0468	-120.4421	10S/14E/21			2/6/1980	2/21/2013	58
10S14E23A001M	Voluntary	37.0524	-120.4035	10S/14E/23			11/26/1941	2/13/2014	122
10S14E24M	Voluntary	37.0449	-120.3969	10S/14E/24	696	255-636	10/29/2015	3/15/2019	8
10S14E26C002M	Voluntary	37.0396	-120.4104	10S/14E/26			2/18/1963	2/12/2014	91
10S14E26R001M	Voluntary	37.0291	-120.4018	10S/14E/26			2/21/2013	2/28/2014	2
10S14E27H001M	Voluntary	37.0360	-120.4241	10S/14E/27			2/2/1999	2/25/2010	17
10S14E31H001M	Voluntary	37.0182	-120.4746	10S/14E/31			2/8/2012	3/18/2016	5
10S14E32Q001M	Voluntary	37.0110	-120.4632	11S/14E/05			10/16/1961	3/20/2019	93
10S14E33L002M	Voluntary	37.0177	-120.4474	10S/14E/33			2/6/1980	2/12/2014	58
10S14E34M001M	CASGEM	37.0163	-120.4341	10S/14E/34	870	295-850	10/8/2015	10/17/2017	2
10S14E35F001M	Voluntary	37.0216	-120.4110	10S/14E/35			2/13/1964	3/11/2019	133
10S15E03L001M	Voluntary	37.0902	-120.3199	10S/15E/03			2/28/2013	2/18/2014	2
10S15E05B001M	Voluntary	37.0955	-120.3524	10S/15E/05			3/21/1944	2/14/2014	120
10S15E05J-2	CASGEM	37.0906	-120.3483	10S/15E/05	104	84-104	10/29/2015	3/15/2019	8
10S15E05K	CASGEM	37.0885	-120.3528	10S/15E/05	105	85-105	10/29/2015	3/15/2019	8
10S15E05Q	CASGEM	37.0836	-120.3549	10S/15E/05	100	80-100	10/29/2015	3/15/2019	8
10S15E05R	CASGEM	37.0837	-120.3488	10S/15E/05	100	80-100	10/29/2015	3/15/2019	8

Table 3.G-1 - Supplemental Groundwater Level Monitoring Network, Chowchilla Subbasin

Well ID	Well Type	Latitude	Longitude	T/R/S	Well Depth	Screen Interval	Earliest Groundwater Level Measurement Date	Most Recent Groundwater Level Measurement Date	Count of Groundwater Level Measurements
10S15E07Q001M	Voluntary	37.0705	-120.3696	10S/15E/07			12/6/1961	2/25/2010	87
10S15E08C001M	Voluntary	37.0830	-120.3591	10S/15E/08			12/6/1961	2/14/2014	88
10S15E09M001M	Voluntary	37.0743	-120.3441	10S/15E/09			12/6/1961	3/4/2011	89
10S15E11H001M	Voluntary	37.0796	-120.2927	10S/15E/11			2/11/1963	2/14/2014	86
10S15E12C002M	Voluntary	37.0821	-120.2846	10S/15E/12			2/19/2013	2/14/2014	2
10S15E13F	CASGEM	37.0614	-120.2928	10S/15E/14	390	150-390	10/29/2015	3/15/2019	8
10S15E17G001M	Voluntary	37.0649	-120.3554	10S/15E/17			12/6/1961	2/14/2014	89
10S15E18M002M	Voluntary	37.0613	-120.3804	10S/15E/18			3/4/1960	2/14/2014	92
10S15E19F001M	Voluntary	37.0477	-120.3741	10S/15E/19			12/5/1961	2/28/2014	92
10S15E20C004M	Voluntary	37.0527	-120.3571	10S/15E/20			1/12/1979	2/14/2014	61
10S15E21R001M	CASGEM	37.0427	-120.3300	10S/15E/21	600	280-600	10/8/2015	3/28/2019	7
10S15E22D	CASGEM	37.0509	-120.3251	10S/15E/22	800	360-800	10/29/2015	3/15/2019	8
10S15E23K001M	Voluntary	37.0471	-120.3016	10S/15E/23			10/26/1920	2/13/2014	150
10S15E25A001M	Voluntary	37.0396	-120.2746	10S/15E/25			2/19/2013	2/13/2014	2
10S15E26A001M	Voluntary	37.0393	-120.2954	10S/15E/26			3/1/1927	2/13/2014	146
10S15E27D001M	Voluntary	37.0396	-120.3279	10S/15E/27			10/1/1928	3/3/2011	51
10S15E27R001M	Voluntary	37.0255	-120.3107	10S/15E/27			10/1/1928	2/13/2014	144
10S15E29A002M	Voluntary	37.0393	-120.3471	10S/15E/29			1/12/1979	2/13/2014	60
10S15E34L001M	Voluntary	37.0177	-120.3202	10S/15E/34			2/19/2013	2/13/2014	2
10S15E35A002M	Voluntary	37.0252	-120.2971	10S/15E/35			3/6/1969	2/13/2014	80
10S15E35J001M	Voluntary	37.0180	-120.2960	10S/15E/35			2/25/2013	2/13/2014	2
10S15E36A001M	Voluntary	37.0252	-120.2785	10S/15E/36			3/15/2002	3/15/2012	11
10S16E04N001M	Voluntary	37.0857	-120.2341	10S/16E/04			12/22/1934	3/1/2011	131
10S16E05M	CASGEM	37.0884	-120.2554	10S/16E/05	440	240-440	10/30/2015	3/15/2019	8
10S16E06R001M	Voluntary	37.0860	-120.2571	10S/16E/06			3/22/1944	2/21/2014	126
10S16E07K001M	Voluntary	37.0760	-120.2638	10S/16E/07			12/11/1961	2/25/2010	88
10S16E09E001M	Voluntary	37.0802	-120.2343	10S/16E/09			2/19/2013	2/21/2014	2
10S16E15F001M	Voluntary	37.0630	-120.2166	10S/16E/15			2/14/2013	2/20/2014	2
10S16E17C001M	Voluntary	37.0691	-120.2477	10S/16E/08			10/24/1952	2/21/2014	101
10S16E18D002M	Voluntary	37.0685	-120.2727	10S/16E/18			12/5/1961	2/21/2014	89
10S16E20A001M	Voluntary	37.0543	-120.2391	10S/16E/20			3/8/1969	3/2/2010	77
10S16E29A001M	Voluntary	37.0396	-120.2418	10S/16E/29			2/6/1980	2/13/2014	58
10S16E29R002M	Voluntary	37.0288	-120.2393	10S/16E/29			1/19/1979	3/2/2011	58
10S16E30A001M	Voluntary	37.0391	-120.2571	10S/16E/30			11/26/1941	2/28/2014	122
10S16E31J001M	Voluntary	37.0180	-120.2571	10S/16E/31			2/6/1980	2/21/2014	58
10S16E32D002M	Voluntary	37.0241	-120.2529	10S/16E/32			2/6/1980	2/25/2010	55
11S13E01Q001M	Voluntary	36.9988	-120.4952	11S/13E/01			10/16/1961	3/20/2019	94
11S14E01R001M	Voluntary	36.9968	-120.3835	11S/14E/01			10/15/2001	10/15/2010	19
11S14E03G001M	Voluntary	37.0024	-120.4254	11S/14E/03			10/26/2011	2/12/2014	6
11S14E04C001M	Voluntary	37.0105	-120.4479	11S/14E/04			3/13/1959	2/21/2014	91
11S14E04J001M	CASGEM	37.0025	-120.4377	11S/14E/04	900		10/8/2015	3/28/2019	7
11S14E05P	CASGEM	36.9991	-120.4667	11S/14E/05	860	290-840	5/13/2019	5/13/2019	0
11S14E06A	CASGEM	37.0092	-120.4738	11S/14E/06	840	170-230	5/14/2019	5/14/2019	0
11S14E07N001M	Voluntary	36.9821	-120.4885	11S/14E/18			2/13/1964	3/20/2019	67
11S14E08R001M	Voluntary	36.9818	-120.4554	11S/14E/17			10/16/1961	3/20/2019	94
11S14E09A003M	Voluntary	36.9949	-120.4377	11S/14E/09			10/16/1961	3/20/2019	95
11S14E10F	CASGEM	36.9899	-120.4326	11S/14E/10	710	170-690	5/15/2019	5/15/2019	0
11S14E12E001M	Voluntary	36.9893	-120.3974	11S/14E/12			10/5/1976	3/20/2019	68
11S14E12H1	CASGEM	36.9894	-120.3844	11S/14E/12	420		11/2/2015	3/14/2019	8
11S14E13R001M	Voluntary	36.9705	-120.3829	11S/14E/13			2/19/1963	3/13/2019	104
11S14E16A001M	Voluntary	36.9810	-120.4413	11S/14E/16			10/16/1961	3/20/2019	105
11S14E17J001M	Voluntary	36.9710	-120.4579	11S/14E/17			2/9/2012	3/9/2017	7
11S14E25L002M	Voluntary	36.9452	-120.3932	11S/14E/25			10/5/1976	3/13/2019	70
11S14E28C	CASGEM	36.9524	-120.4461	11S/14E/28	840	320-680	5/16/2019	5/16/2019	0
11S14E36R001M	Voluntary	36.9241	-120.3824	11S/14E/36			2/14/1964	3/10/2017	87
11S15E04H001M	Voluntary	37.0052	-120.3288	11S/15E/04			2/19/2013	2/28/2014	2
11S15E06L	CASGEM	37.0022	-120.3929	11S/14E/01	390	120-390	10/30/2015	3/19/2019	8
11S15E09C001M	Voluntary	36.9952	-120.3377	11S/15E/09			3/22/1950	2/13/2014	112
11S15E17P001M	Voluntary	36.9685	-120.3582	11S/15E/17			2/9/2012	3/10/2017	7
11S15E20Q001M	Voluntary	36.9530	-120.3532	11S/15E/20			2/9/2012	3/13/2019	9
11S15E29H001M	Voluntary	36.9457	-120.3482	11S/15E/29			7/28/1949	3/20/2019	105
11S15E30A001M	Voluntary	36.9521	-120.3643	11S/15E/30			2/14/1964	3/13/2019	91
Clayton WD Shallow Ag Well #2	Other	37.0051	-120.5040	11S/13E/01			10/1/2001	4/1/2018	19
Site 1	Future RMS	37.1332	-120.3827	9S/15E/19					
Site 2	Future RMS	37.1811	-120.3254	9S/15E/03					
Site 3	Future RMS	37.1347	-120.2206	9S/16E/21					
Site 5	Future RMS	37.0539	-120.2947	10S/15E/23					
Site 6	Future RMS	37.0148	-120.3833	13S/16E/03					
Site 7	Future RMS	36.9527	-120.3463	11S/15E/20					
Site 9	Future RMS	37.0236	-120.2567	10S/16E/31					
SJRRP_MW-10-78	USBR	36.9817	-120.4978	11S/13E/13	28	43763	4/14/2010	10/31/2018	295

Table 3.G-1 - Supplemental Groundwater Level Monitoring Network, Chowchilla Subbasin

Well ID	Well Type	Latitude	Longitude	T/R/S	Well Depth	Screen Interval	Earliest Groundwater Level Measurement Date	Most Recent Groundwater Level Measurement Date	Count of Groundwater Level Measurements
SJRRP_MW-10-80	USBR	37.0018	-120.5081	11S/13E/01	27.9	43763	4/14/2010	7/27/2016	226
SJRRP_MW-11-162	USBR	37.0287	-120.5370	10S/13E/27	30		1/11/2012	10/31/2018	205

NOTE:

T/R/S location corresponds to Township/Range/Section grid on Figure A-X